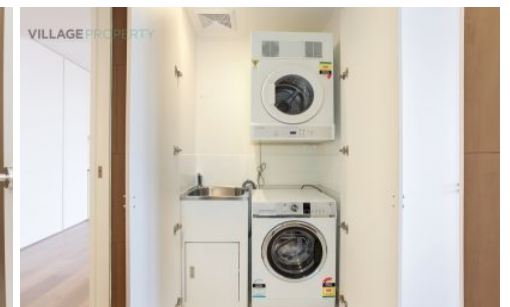
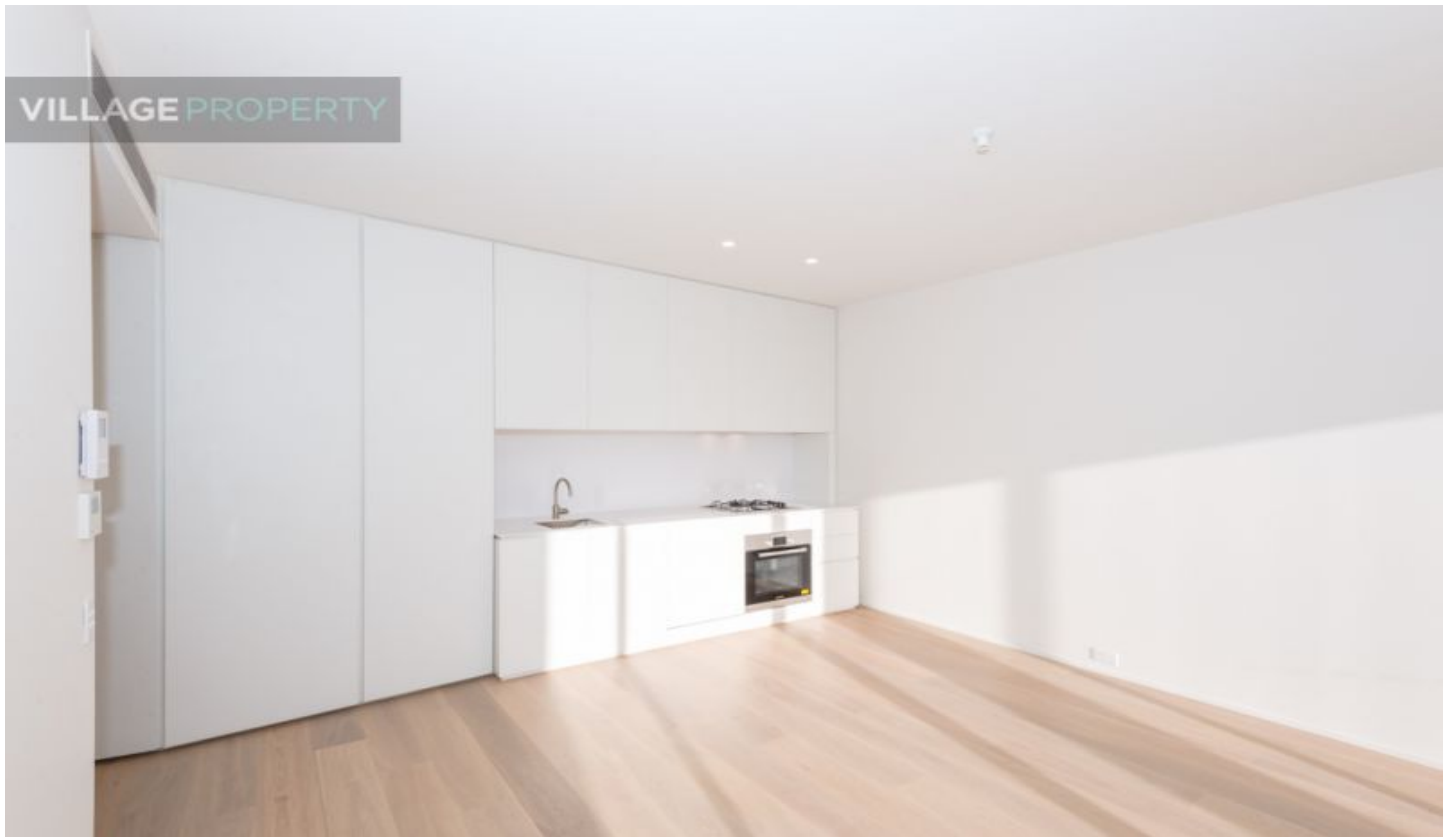


# VILLAGE PROPERTY



2208/6 Grove Street Dulwich Hill NSW

1 1 1

Available 3rd July

Regarded with high quality finishes and its smart floor plan, this modern development will meet all your needs. Fantastically located; one minute walk to Arlington Light Rail stop - be in Sydney's CBD in 30 minutes, moments to Johnson Park and Arlington Recreation Reserve and close to vibrant village hubs of Dulwich Hill and Marrickville. You are just a Moments stroll to Johnson Park and Arlington Recreation Reserve and the iconic Sideways Deli Cafe. Located in the inner city hubs of Dulwich Hill and Marrickville, Arlington Grove is at the heart of a new approach to urban style.

Lease periods are 6-12 months. Pets at landlord's

[For full version visit the website](https://www.villageproperty.com.au)

**Type** : Apartment

**Price** : \$670 Per Week DEPOSIT TAKEN

**View** : <https://www.villageproperty.com.au/lease/nsw/inner-west/dulwich-hill/residential/apartment/8024233>



**Alan Wang**  
1300 62 44 00

<https://www.villageproperty.com.au>

*Arlington*  
Grove Dulwich Hill

VALENCIA  
apartments

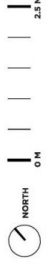
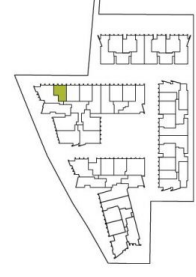
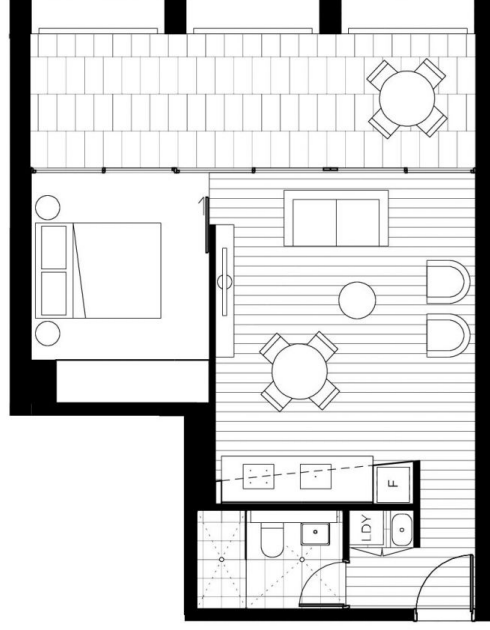
ONE BEDROOM  
APARTMENT

2208

INTERNAL AREA: 41m<sup>2</sup>  
EXTERNAL AREA: 16m<sup>2</sup>  
TOTAL: 57m<sup>2</sup>

ARLINGTONGROVE.COM.AU  
1800 881 221

galileo **CBRE**



All areas shown are draft and subject to survey. All apartments subject to contract and availability. Images showing the building, interiors and views are computer generated prior to construction and indicative only. Dimensions, layouts, finishes and specifications are subject to change and may differ from those shown. Views differ between apartments. Ground floor retail not yet confirmed. Furniture and plantings are for decorative purposes and are not included.  
01.05.2015