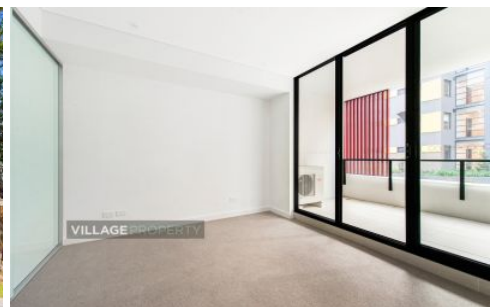


VILLAGE PROPERTY



209B/118 Bowden Street Meadowbank NSW

1  1  1 

Available Now

"Kingston Quarter" Shepherds Bay is the area's newest development offering a waterfront position, luxurious designer finishes and the most convenient access to Meadowbank's surrounds. Resort style grounds create a luxurious waterside playground with Train station, Ferry wharf and local buses all within a short walk.

Features Include:

- Good sized bedroom including built in wardrobe
- Great open plan layout
- Tiled flooring and carpet in bedrooms
- Reverse cycle air-conditioning
- One secure car space

[For full version visit the website](https://www.villageproperty.com.au)

Type : Apartment

Price : DEPOSIT TAKEN

View : <https://www.villageproperty.com.au/lease/nsw/northern-suburbs/meadowbank/residential/apartment/8022952>



Clarice (nikki) Villanueva
1300 20 55 69

<https://www.villageproperty.com.au>