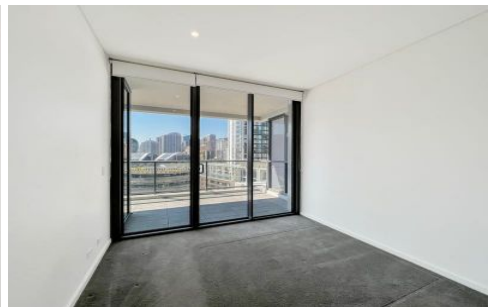
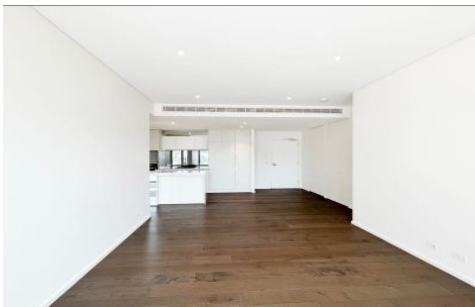


# VILLAGE PROPERTY



**3157/65 Tumbalong Boulevard Haymarket NSW**

2  2  1 

Available from 7th June -

Located in the as new Darling One development this apartment is ready to move straight into, it has been furnished to an exceptional standard and is sure to impress.

Sydney's iconic address Situated in the highly sort-after Darling Harbour precinct, this coveted apartment is in Sydney's newest and renowned Darling Square development is a rare offering that encompasses all the trappings of modern urban living.

**Price** : \$1,400 Per Week

**View** : <https://www.villageproperty.com.au/lease/nsw/sydney-city/haymarket/residential/apartment/8000048>



**Zhuoqun (Kate) Zhang**  
1300 62 44 00

Spacious bedrooms with Built In wardrobes  
Internal Laundry with Dryer  
Deluxe kitchen Miele gas appliances, including fridge  
Zone ducted air-conditioning

<https://www.villageproperty.com.au>

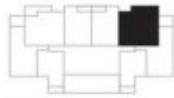
# Darling One

SKETCHES & APARTMENTS

## LAYOUT PLAN

apartment type	E
apartment no.	001, 002, 003, 004, 005, 006, 007, 008, 009, 010, 011, 012, 013, 014, 015, 016, 017, 018, 019, 020, 021, 022, 023, 024, 025, 026, 027, 028, 029, 030, 031, 032, 033, 034, 035, 036
bedrooms	2
apartment area	62 m <sup>2</sup>
balcony area	12 m <sup>2</sup>
total apartment area	80 m <sup>2</sup>

For space in relation to floor plan, see page 102. Dimensions given are net and do not include the area of a wall and ceiling. Dimensions are given in meters and rounded up to the nearest centimeter. For more information, please refer to the floor plan and apartment schedule on page 102. All prices, including VAT, are given in Euros.



**DARLING SQ.**  
\*\*\*\*\*