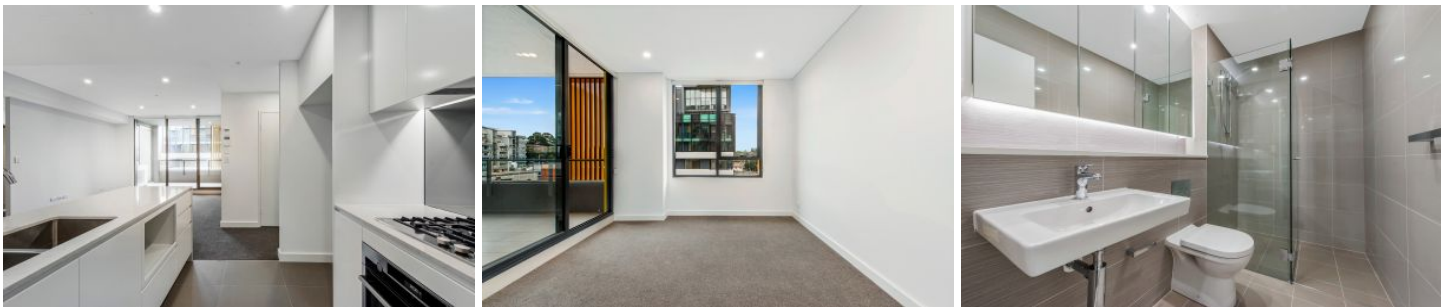



VILLAGE PROPERTY



506A/60 Nancarrow Avenue Meadowbank NSW

2  2  1 

Available on the 15th May

"Kingston Quarter" Shepherds Bay is the area's newest development offering a waterfront position, luxurious designer finishes and the most convenient access to Meadowbank's surrounds. Resort style grounds create a luxurious waterside playground with Train station, Ferry wharf and local buses all within a short walk.

Property Features:

- Generous bedrooms with built-ins
- Large study area
- Balcony ideal for entertaining
- Great open plan layout
- Ducted air-conditioning
- Secure car space
- Swimming pool

Price : \$860 Per Week

View : <https://www.villageproperty.com.au/lease/nsw/northern-suburbs/meadowbank/residential/apartment/7999290>



Wendy Flores
1300 20 55 69