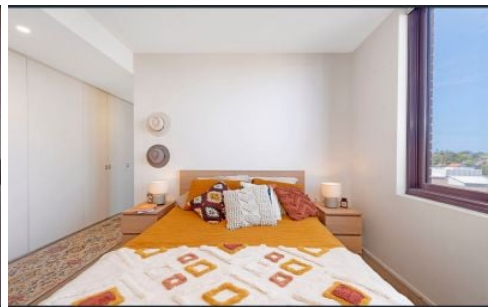
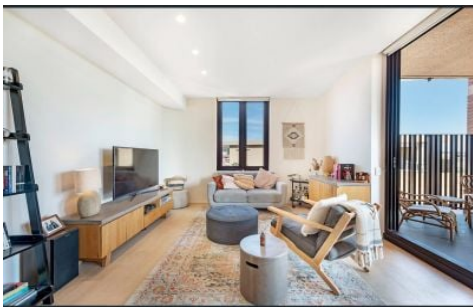


VILLAGE PROPERTY



1601/6 Grove Street Dulwich Hill NSW

2  2  1 

Available 4th June

Sleek, stylish and superbly appointed, this two-bedroom executive apartment provides an easy urban lifestyle situated in the award-winning 'Arlington Grove' development. It will have a great impression on those looking for an ultra-modern property with good proportions, designer finishes and a private setting that captures an elevated district outlook. This exceptional lock-up-and-leave home is also ideally positioned in a vibrant location in the heart of the inner west, with the local Café Calibre and Johnson Park literally footsteps away.

Lease periods 6-12 months. No pets.

Features:

- Crisp and fresh interiors feature a light-filled open design

Price : \$850 per week DEPOSIT TAKEN

View : <https://www.villageproperty.com.au/lease/nsw/inner-west/dulwich-hill/residential/apartment/7999253>



Alan Wang
1300 62 44 00

<https://www.villageproperty.com.au>



LEVEL 6

1601/6 GROVE STREET

DULWICH HILL

SCAPE Floor Planning Disclaimer: This floor plan is conceptual only. It is provided for illustrative purposes only and should not be relied upon. We make no guarantee as to the correctness of this plan. All interested parties should make and rely on their own enquiries in determining the accuracy of the information contained in this floor plan.