

VILLAGE PROPERTY



407/3 Forest Grove Epping NSW

3  2  2 

Available May 30th

Make this your new home. Contemporary apartment in 'Jade Residences', a boutique complex overlooking lush green parkland. Moments from local cafes and eateries. Stroll to Epping station for easy access to Sydney CBD (express trains), Chatswood and Macquarie University.

Price : \$1000 Per Week

View : <https://www.villageproperty.com.au/lease/nsw/northern-suburbs/epping/residential/apartment/7998848>

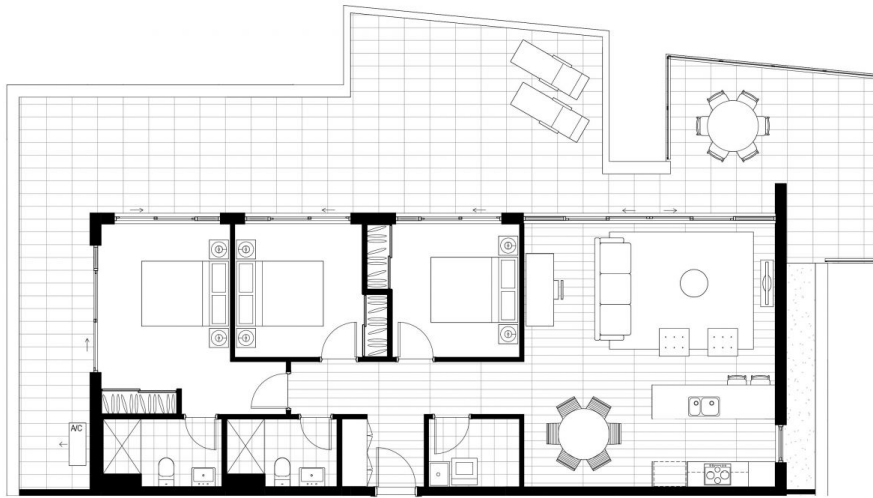
Key features:

- Penthouse 3 bedroom apartment with high ceilings
- Generously sized bedrooms with built in wardrobes
- Bright and airy open living area opening out to massive size balcony
- Outstanding interior finishes with timber-look tiles in living & balcony areas.
- Modern Bathrooms



Taneisha Kerr
1300 62 44 00

<https://www.villageproperty.com.au>



J

JADE RESIDENCES

3 BEDROOMS

~

APARTMENT

B503

~

LEVEL 5

INTERNAL	98 m ²
BALCONY	80 m ²
TOTAL	178 m ²



NOT TO SCALE

1800 663 638
jaderesidences.com.au

LOFTEX CBRE



Disclaimer: Please note that the layout plan was produced prior to construction. The information is believed to be correct but is not guaranteed. Changes may be made during construction and dimensions, areas, fittings, finishes and specification are subject to change without notice in accordance with the provisions of the contract for sale. The furniture and furnishings depicted are not included with any sale and purchasers must refer to their contract for sale for the list of inclusions. The positions of the furniture and furnishings should not be taken to be indicative of final positions of power points, tv connection points and the like. Prospective purchasers must rely on their own enquiries. All graphics including site layout and balconies and the like are indicative only. Sublettings for services are not depicted. The layout plan is at an unspecified scale.

Revision 1