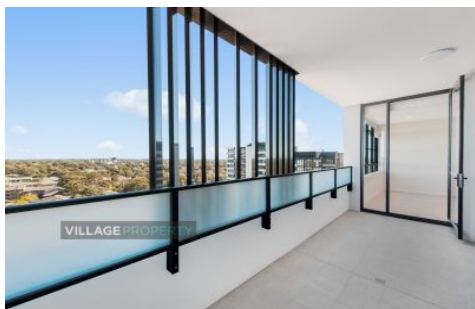


VILLAGE PROPERTY



802/2 Kiln Road Kirrawee NSW

2  2  1 

Available NOW

Unmatched in refinement, South Village apartments are some of the most exquisite residences on offer. Superbly located, these beautiful apartments are a unique opportunity to experience quintessential living in an urban lifestyle. Anchored by Coles and Aldi supermarket just downstairs and Woolworths just footsteps away for all your everyday grocery needs. Enjoy the absolute convenience to shops, supermarkets, cafes, restaurants, child care centre and park all located just downstairs. Short 5 minutes walk to Kirrawee train station.

Lease periods are 6-12 months. Pets to be considered at landlord's discretion.

[For full version visit the website](https://www.villageproperty.com.au)

Type : Apartment

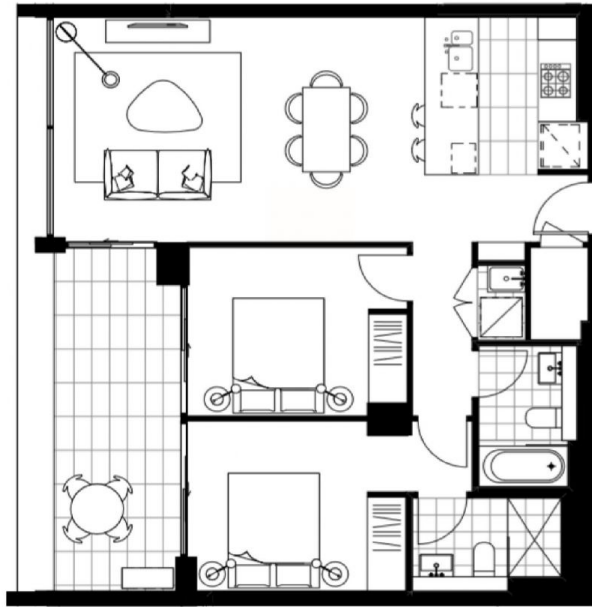
Price : \$770 Per Week DEPOSIT TAKEN

View : <https://www.villageproperty.com.au/lease/nsw/sutherland/kirrawee/residential/apartment/7986338>



Alan Wang
1300 62 44 00

<https://www.villageproperty.com.au>



PRICE

PARKING

South Village *kinross*

Building G Key Plan



Level 7-13
G7.02, **G8.02**, G9.02, G10.02, G11.02,
G12.02, G13.02

2 BED 2 BATH

TOTAL 88 sqm

INTERNAL AREA 75 sqm

BALCONY AREA 13 sqm

Note: This plan is a guide only and does not constitute an offer or contract. Please note that changes may be made to the development during construction and elements such as areas, fittings, fixtures etc. may change without notice. All parties should rely on their own investigation to validate this information as it is not guaranteed. No liability will be accepted for any inaccuracy or misstatement.

www.southvillageapartments.com.au
1800 334 267