

VILLAGE PROPERTY



59A Johnston Avenue Kirrawee NSW

4 3 2

Available NOW -

Brand new modern family home presented in a peaceful location with a smart open floorplan living seamlessly flowing onto an outdoor entertainer's alfresco. North facing backyard with abundance of natural light sun-drenched in the living area and split across 2 floors to separate comfort and entertainment. Close proximity to schools, cafes, shops, and transport at your convenience. Only a short 5 minutes drive to South Village shopping centre and Kirrawee Train Station. 7 minutes drive away from Miranda Westfield shopping centre.

Take advantage of this limited opportunity to live in a highly desirable location.

Lease periods 6-12 months. Pets at landlord's discretion.

Price : \$1250 Per Week

View : <https://www.villageproperty.com.au/lease/nsw/sutherland/kirrawee/residential/semi-detached/7982475>

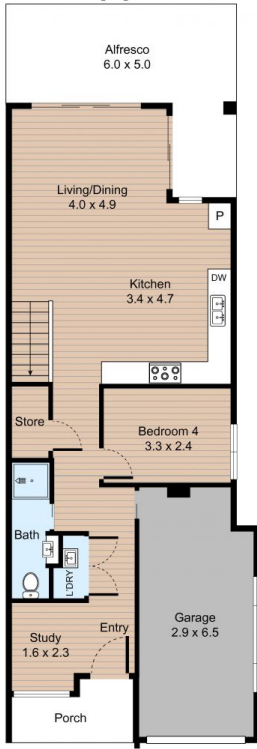


Alan Wang
1300 62 44 00

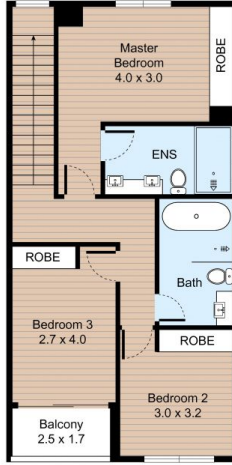
<https://www.villageproperty.com.au>

59A Johnston Avenue, Kirrawee

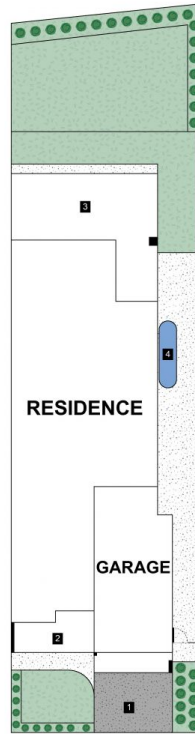
4 Bed 3 Bath 2 Car



GROUND FLOOR



FIRST FLOOR



SITE PLAN

LEGEND

1. Driveway
2. Porch
3. Alfresco
4. Water Tank

Internal : 152m²
External : 23m²



VILLAGE PROPERTY

All information contained herein is gathered by Little Hinges. Whilst the scanning technology is highly reliable, we cannot guarantee its accuracy and interested parties should rely on their own enquiries.