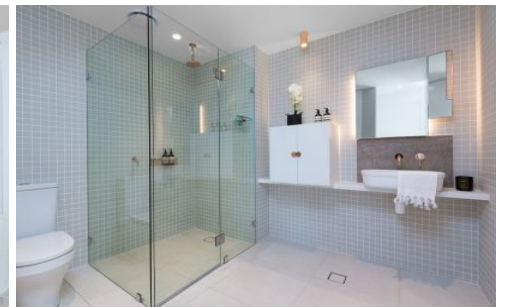
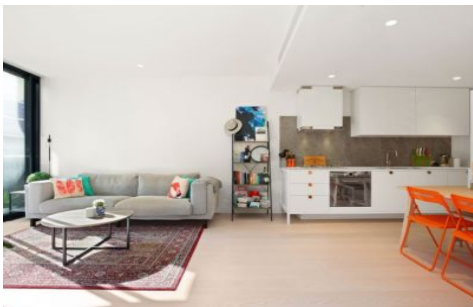


# VILLAGE PROPERTY



**F102/72 MacDonald Street Erskineville NSW**

Available 2nd May

Beautifully crafted with an exacting attention to detail in both design and finish, this breathtaking Eve residence is the ultimate in modern comfort. Smart, stylish and easy to maintain, this is the ideal offering anyone seeking an entry into one of Erskineville's finest. Short walk to Erskineville and St Peters Train Stations, 3Km to CBD. Communal rooftop barbeque area and internal garden courtyard.

Ideally situated, you are only moments from the vibrant Enmore and Newtown entertainment precinct, the lush greenery of Sydney Park or Moore Park grounds, abundant cafes and restaurants or weekend markets dotted throughout the energetic inner west. Woolworths Metro Park Sydney minutes walk away for your everyday shopping needs at your convenience.

1 1

**Price** : \$650 per week DEPOSIT TAKEN

**View** : <https://www.villageproperty.com.au/lease/nsw/inner-west/erskineville/residential/apartment/7966817>

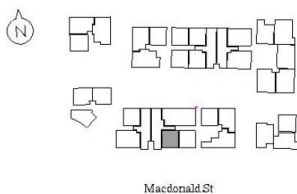
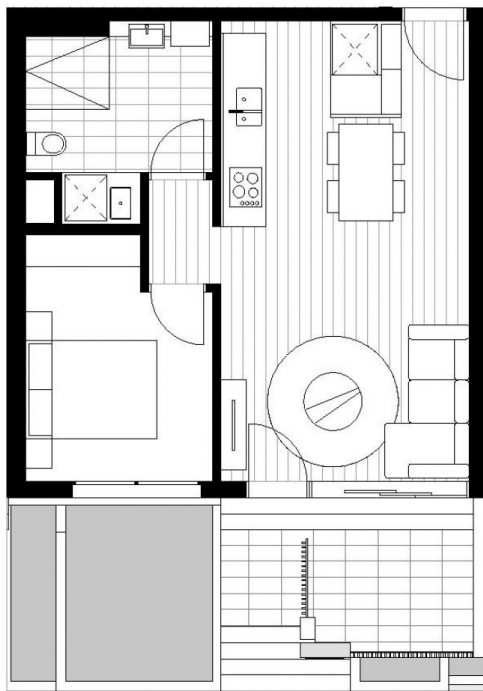


**Alan Wang**  
1300 62 44 00

<https://www.villageproperty.com.au>

# EVE

BY Fridcorp™



## APARTMENT F102

Internal 49.2m<sup>2</sup>  
 External 19.2m<sup>2</sup>  
 Total 68.4m<sup>2</sup>

For more information  
 1800 221 336  
[EveByFridcorp.com.au](http://EveByFridcorp.com.au)

Disclaimer: This plan is a guide only and does not constitute an offer or contract. Please note changes may be made during the development and areas, fittings, fixtures and specifications are subject to change without notice in accordance with the terms of the contract of sale. All parties must rely on their own investigation to validate this information as it is not guaranteed. No liability will be accepted for any inaccuracy or misstatement. (E)

**Hecker  
Guthrie**



**CBRE**