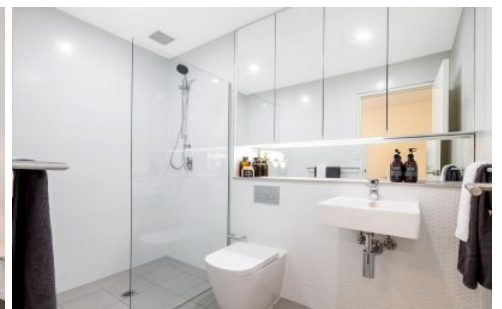


# VILLAGE PROPERTY



306/1-3 Dunning Avenue Rosebery NSW

2 2 1

Available 29th April

This stunning and contemporary residence offers sophisticated low maintenance living in the modern 'Revere' boutique development offering refinement, quality and a premier position in what is undoubtedly one of Sydney's most vibrant new community enclaves. Situated in a highly sought-after location, this apartment is just moments away from a range of amenities including cafes, restaurants, shopping centers, and public transportation options. Minutes walk to bus routes travelling to UNSW and Sydney CBD.

Lease periods 6-12 months. Pets at landlord's discretion.

[For full version visit the website](https://www.villageproperty.com.au)

**Type** : Apartment

**Price** : \$990 per week DEPOSIT TAKEN

**View** : <https://www.villageproperty.com.au/lease/nsw/eastern-suburbs/rosebery/residential/apartment/7965633>



**Alan Wang**  
1300 62 44 00

<https://www.villageproperty.com.au>

# APARTMENT

106, 206, 306, 406

Level 1, 2, 3, 4

■ 406

■ 306

■ 206

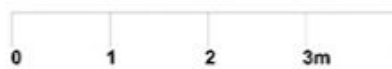
■ 106

2 BEDROOM  
2 BATHROOM  
1 CAR PARK

INTERNAL AREA: 75.6m<sup>2</sup>

EXTERNAL AREA: 16.3m<sup>2</sup>

TOTAL: 91.9m<sup>2</sup>



SCALE 1:50 @ A3



REVERE  
ROSEBERY

DISCLAIMER: PLEASE NOTE THAT THE LAYOUT PLAN WAS PRODUCED PRIOR TO CONSTRUCTION. CHANGES MAY BE MADE DURING CONSTRUCTION AND DIMENSIONS, AREAS, FITTINGS, FINISHES AND SPECIFICATION ARE SUBJECT TO CHANGE WITHOUT NOTICE IN ACCORDANCE WITH THE PROVISIONS OF THE CONTRACT FOR SALE. THE FURNITURE AND FURNISHINGS DEPICTED ARE NOT INCLUDED WITH ANY SALE AND PURCHASERS MUST REFER TO THEIR CONTRACT FOR SALE FOR THE LIST OF INCLUSIONS. THE POSITION OF THE FURNITURE AND FURNISHINGS SHOULD NOT BE TAKEN TO BE INDICATIVE OF FINAL POSITIONS OF POWER POINTS, TV CONNECTION POINTS AND THE LIKE. PROSPECTIVE PURCHASERS MUST RELY ON THEIR OWN ENQUIRIES. ALL GRAPHICS INCLUDING THE LAYOUT AND BALUSTRADES AND THE LIKE ARE INDICATIVE ONLY. BUXX-EADS FOR SERVICES ARE NOT DEPICTED. THE LAYOUT PLAN IS AT AN UNDEFINED SCALE.