

VILLAGE PROPERTY



401/18 Carlingford Road Epping NSW

2  2  1 

Available 17th April

Set high in the modern development "Epping Palms" this apartment is a must to inspect.

- North facing apartment , high ceiling (living room) dual levels with open outlook
- Great sized balcony for entertainment
- Two bedrooms with built-ins and master has ensuite on the 2nd floor
- Quality ceaserstone bench top; Miele appliances
- Timber floor board in living, air con,
- Basement storage
- Central locale, a short stroll to train, buses, restaurant and Cafes, School catchments, university

To register your interest, submit an enquiry and keep

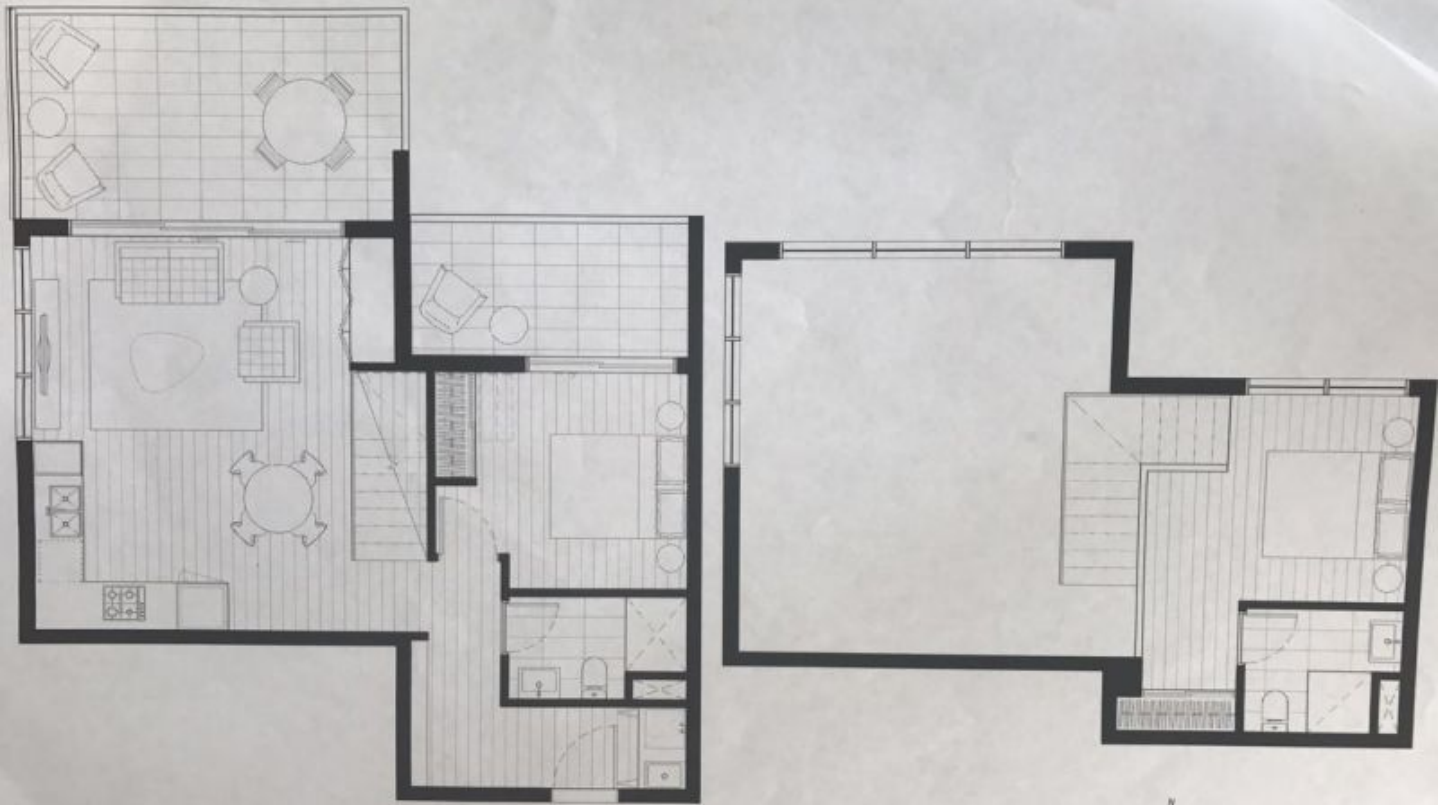
Price : Holding Deposit Taken

View : <https://www.villageproperty.com.au/lease/nsw/northern-suburbs/epping/residential/apartment/7963147>



Taneisha Kerr
1300 62 44 00

<https://www.villageproperty.com.au>



EPPING PALMS
16-22 CARLINGFORD ROAD, EPPING

BP.01

2 BEDROOM
1 CARSPACE

INTERNAL	71m ²
EXTERNAL	24m ²
TOTAL	95m²



PENTHOUSE LEVEL

Disclaimer: This plan is a guide only and does not constitute an offer or contract. Please note changes may be made during the development and process. Sitings, fixtures and specifications are subject to change without notice in accordance with the terms of the contract of sale. All parties must rely on their own investigation to verify this information as it is to not have been checked in accordance to State Scheme (Prevalent Development) Act 1973 and State Scheme (Prevalent Development) Regulations 2012. All responsible party has been taken in the preparation of this floor plan. Homestead Group and its appointed agents make no warranty as to the accuracy of the information provided in these plans and areas. Homestead Group and its appointed agents do not warrant any information or matter contained herein other than the contents of sale or actual constructed development. These plans and areas may be subject to change. All rights reserved.