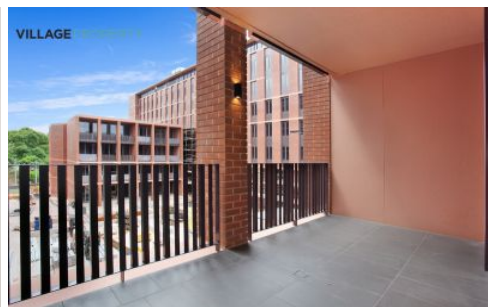
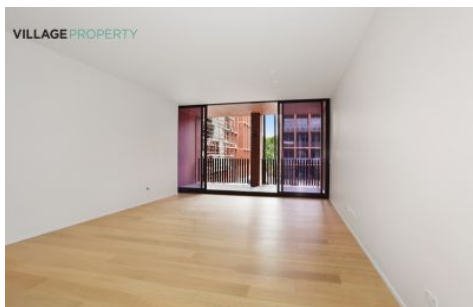


# VILLAGE PROPERTY



5213/6 Grove Street Dulwich Hill NSW

2  2  1 

Available 11th April

Regarded with high quality finishes and its smart floor plan, this modern development will meet all your needs. Fantastically located; one minute walk to Arlington Light Rail stop - be in Sydney's CBD in 30 minutes, moments to Johnson Park and Arlington Recreation Reserve and close to vibrant village hubs of Dulwich Hill and Marrickville. You are just a Moments stroll to Johnson Park and Arlington Recreation Reserve and the iconic Sideways Deli Cafe. Located in the inner city hubs of Dulwich Hill and Marrickville, Arlington Grove is at the heart of a new approach to urban style.

Lease periods are 12 months. No pets preferred.

[For full version visit the website](https://www.villageproperty.com.au)

**Type** : Apartment

**Price** : \$850 per week DEPOSIT TAKEN

**View** : <https://www.villageproperty.com.au/lease/nsw/inner-west/dulwich-hill/residential/apartment/7955783>



**Alan Wang**  
1300 62 44 00

<https://www.villageproperty.com.au>

Arlington  
Grove Dulwich Hill

VERNA  
apartments

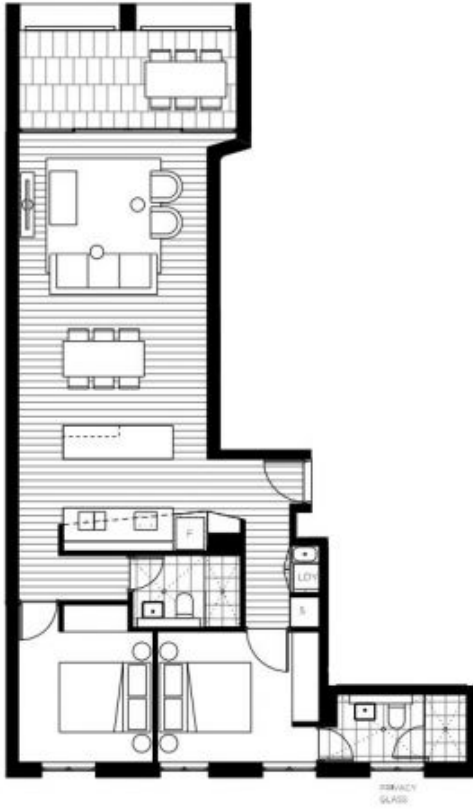
TWO BEDROOM  
APARTMENT

5213

INTERNAL AREA:	79m <sup>2</sup>
EXTERNAL AREA:	11m <sup>2</sup>
TOTAL:	90m <sup>2</sup>

ARLINGTONGROVE.COM.AU  
1800 881 221

galileo CBRE



All areas shown are approximate and subject to survey. All apartments subject to contract and conditions. Images showing the building, fixtures and fittings are computer generated prior to construction and not actual views. Dimensions, layouts, fixtures and fittings are subject to change and may differ from those shown. Views differ between apartments. Ground floor level not at sea level. Furniture and fittings are for illustrative purposes and are not included. 10/04/2016