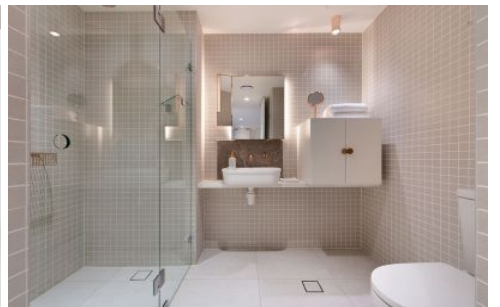
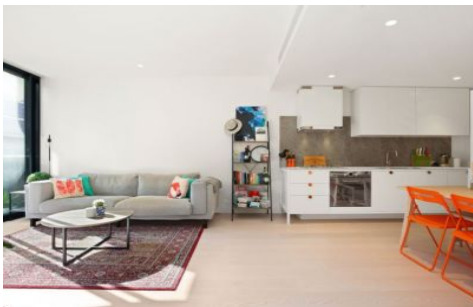


# VILLAGE PROPERTY



**D401/72 MacDonald Street Erskineville NSW**

2  1  1 

Available 4th April

Beautifully crafted with an exacting attention to detail in both design and finish, this breathtaking Eve residence is the ultimate in modern comfort. Smart, stylish and easy to maintain, this is the ideal offering anyone seeking an entry into one of Erskineville's finest.

Eve Apartments offers an unbeatable urban lifestyle just 10 minutes from the CBD. Only 250m from the train station and centrally located in Erskineville's famous café and restaurant precinct. Be entertained, be indulged and be nourished with the best in dining, shopping and entertainment close by. Woolworths Metro Park Sydney minutes walk away for your everyday shopping needs at

**Type** : Apartment

**Price** : \$930 per week DEPOSIT TAKEN

**View** : <https://www.villageproperty.com.au/lease/nsw/inner-west/erskineville/residential/apartment/7954795>



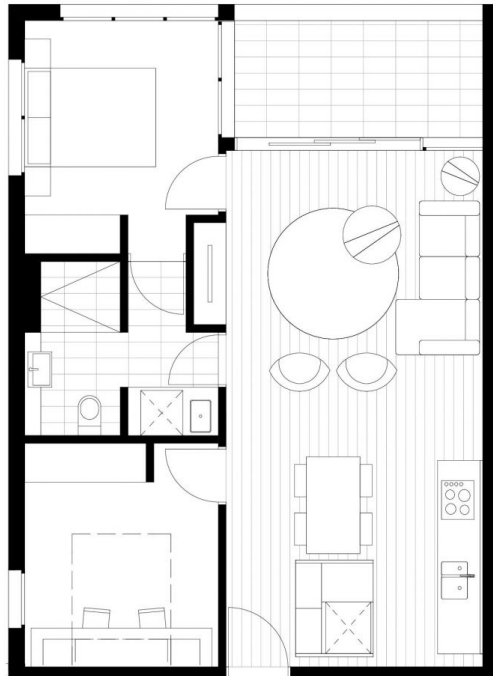
**Alan Wang**  
1300 62 44 00

[For full version visit the website](https://www.villageproperty.com.au)

<https://www.villageproperty.com.au>

# EVE

BY Fridcorp™



Macdonald St

## APARTMENT D401

**Internal** 62.9 m<sup>2</sup>  
**External** 7.4 m<sup>2</sup>  
**Total** 70.3 m<sup>2</sup>

**For more information**  
 1800 221 336  
[EveByFridcorp.com.au](http://EveByFridcorp.com.au)

Disclaimer: This plan is a guide only and does not constitute an offer or contract. Please note changes may be made during the development and access. Fixings, fixtures and specifications are subject to change without notice in accordance with the terms of the contract of sale. All parties must rely on their own investigation to validate this information as it is not guaranteed. No liability will be accepted for any inaccuracy or misstatement. (B)

**Hecker  
Guthrie**



**CBRE**