

# VILLAGE PROPERTY



**403/2 Kiln Road Kirrawee NSW**

2  2  1 

Available 2nd April

Unmatched in refinement, South Village apartments are some of the most exquisite residences on offer. Superbly located, these beautiful apartments are a unique opportunity to experience quintessential living in an urban lifestyle.

Anchored by Coles supermarket just downstairs and Woolworths just footsteps away for all your everyday grocery needs. Enjoy the absolute convenience to shops, supermarkets, cafes, restaurants, child care centre and park all located just downstairs. Short 5 minutes walk to Kirrawee train station.

Take advantage of this limited opportunity to live in a highly

[For full version visit the website](https://www.villageproperty.com.au)

**Type** : Apartment

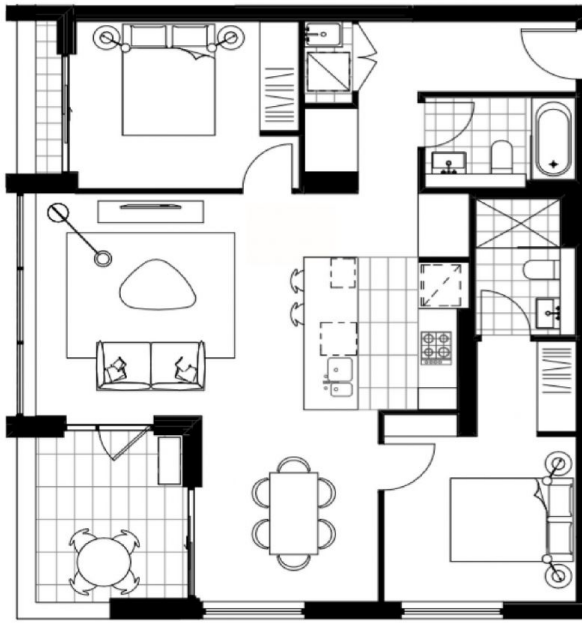
**Price** : \$770 Per Week DEPOSIT TAKEN AFTER FIRST INSPECTION

**View** : <https://www.villageproperty.com.au/lease/nsw/sutherland/kirrawee/residential/apartment/7951689>



**Alan Wang**  
1300 62 44 00

<https://www.villageproperty.com.au>



PRICE

PARKING

## South Village *kimberley*

### Building C Key Plan



Level 2-5  
G2.03, G3.03, G4.03, G5.03, G6.03

2 BED 2 BATH

TOTAL	91 sqm
INTERNAL AREA	83 sqm
BALCONY AREA	8 sqm

Note: this plan is a guide only and does not constitute an offer or contract. Please note that changes may be made to the development during construction and elements such as colour, fittings, fixtures etc may change without notice. All parties should rely on their own investigation to validate this information as it is not guaranteed. No liability will be accepted for any inaccuracy or misstatement.

[www.southvillageapartments.com.au](http://www.southvillageapartments.com.au)  
1800 334 267