

# VILLAGE PROPERTY



501/35 Flora Street Kirrawee NSW

2  2  1 

Available 11th April

Unmatched in refinement, South Village apartments are some of the most exquisite residences on offer. Superbly located, this beautiful apartment is a unique opportunity to experience quintessential living in an urban lifestyle.

Anchored by Coles supermarket just downstairs and Woolworths just footsteps away for all your everyday grocery needs. Enjoy the absolute convenience to shops, supermarkets, cafes, restaurants, child care centre and park all located just downstairs. Short 5 minutes walk to Kirrawee train station.

Lease periods are 6-12 months. No pets preferred

[For full version visit the website](https://www.villageproperty.com.au)

**Type** : Apartment

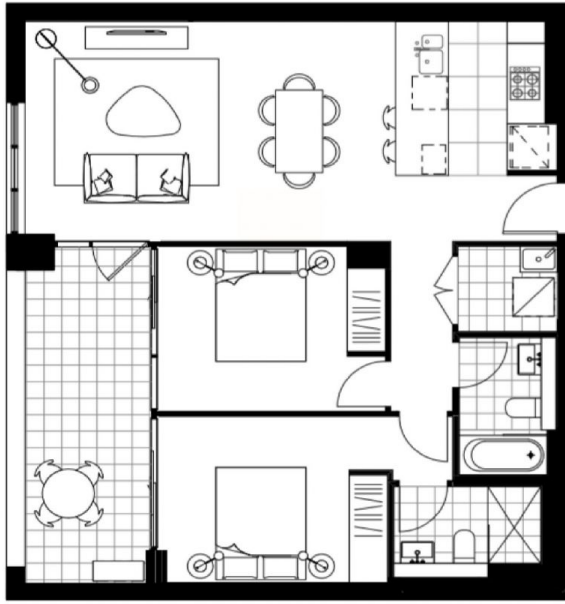
**Price** : \$770 per week DEPOSIT TAKEN

**View** : <https://www.villageproperty.com.au/lease/nsw/sutherland/kirrawee/residential/apartment/7951535>



**Alan Wang**  
1300 62 44 00

<https://www.villageproperty.com.au>



PRICE  
PARKING

## South Village *kinross*

### Building E Key Plan



Level 2-12  
E2.01, E3.01, E4.01, **E5.01**, E6.01, E7.01,  
E8.01, E9.01, E10.01, E11.01, E12.01

2 BED 2 BATH

TOTAL	89 sqm
INTERNAL AREA	76 sqm
BALCONY AREA	13 sqm

Note: this plan is a guide only and does not constitute an offer or contract. Please note that changes may be made to the development during construction and elements such as areas, fittings, fixtures, etc. may change without notice. All parties should rely on their own inspection to validate this information as it is not guaranteed. No liability will be accepted for any inaccuracy or misstatement.

[www.southvillagespartments.com.au](http://www.southvillagespartments.com.au)  
1800 334 267