

VILLAGE PROPERTY



209/8 Wharf Road Gladesville NSW

1 1 1

Experience the pinnacle of urban living in "Wharf Square", a prestigious development synonymous with luxury and style, crafted by the esteemed architects Kann Finch and Marchese Partners. This apartment, a sanctuary of sophistication, offers a seamless blend of indoor and outdoor living spaces, accentuated by its thoughtful design and the infusion of natural light throughout. Its prime location ensures you are moments away from Victoria Road's bustling transport network, eclectic shops, and essential conveniences, enhancing the urban experience with unparalleled accessibility.

- Elegantly designed with a spacious layout encompassing a generous bedroom and a versatile study or second bedroom
- Abundant natural light with northeast-facing windows offering picturesque rooftop vistas

Price : SOLD

View : <https://www.villageproperty.com.au/sale/nsw/north-horn-suburbs/gladesville/residential/apartment/7951202>

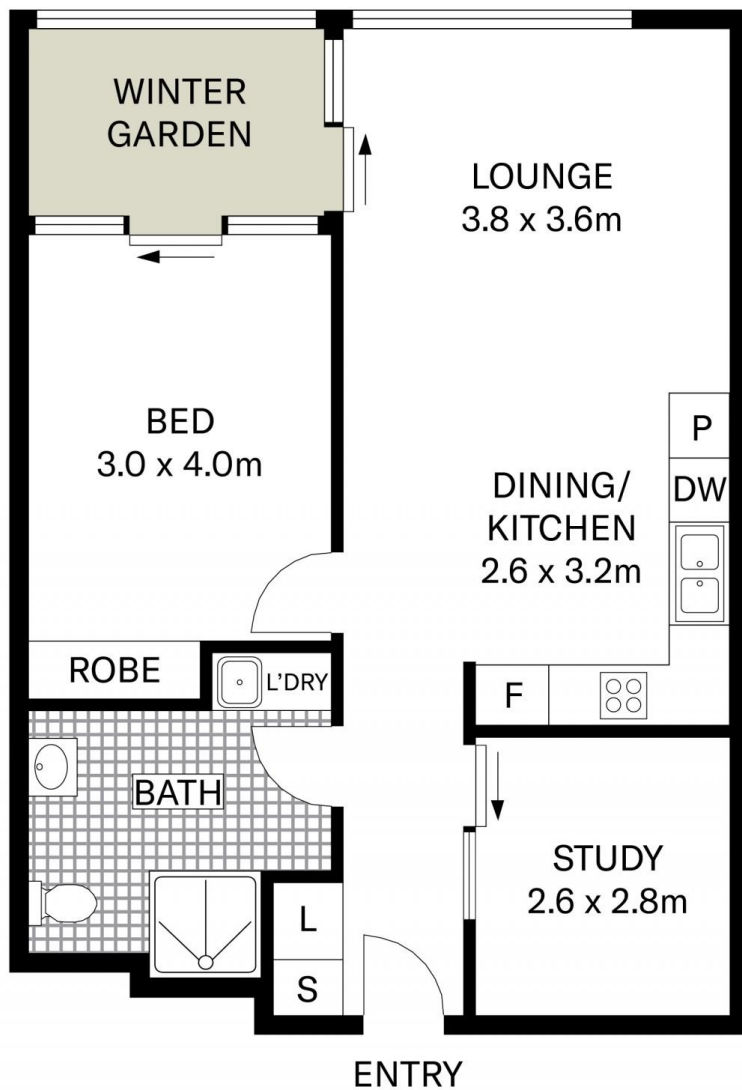


Gene Kingston
1300 62 44 00

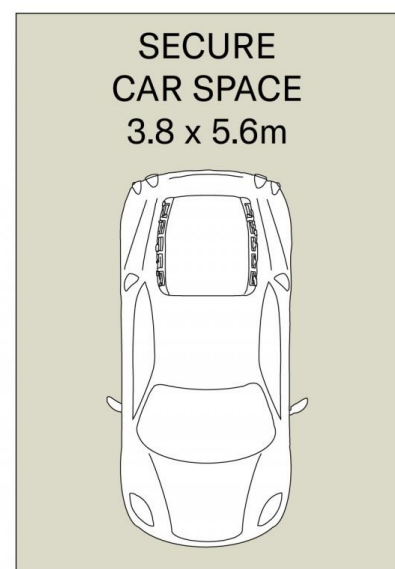


Jack Williams
1300 62 44 00

<https://www.villageproperty.com.au>



(NOT IN POSITION)



(NOT IN POSITION)

All information contained herein is gathered from sources we believe to be reliable.
We cannot however guarantee its accuracy and parties should and rely on their own requirements.



209/8 Wharf Road, Gladesville

VILLAGE
PROPERTY