

VILLAGE PROPERTY



7/63 Fletcher Street Tamarama NSW

2  2  1 

Available NOW -

Presented in the Kalypso boutique building with only 11 units, uncover a luxurious presence that could only be here in Tamarama. Inspired by the natural flow of the ocean and effortless hum of life in this iconic suburb, Kalypso has been crafted with passion, artistry and timeless style.

Quality and craftsmanship are on display through the use of elegant Bianco Lana marble benchtops and integrated Wolf and Sub-Zero appliances including a gas cooktop, steam oven and refrigerator, setting a new benchmark for home cooking.

Incomparable location minutes stroll to Tamarama beach and Bondi Beach, surrounded by the best of Sydney's Eastern Suburbs. Only a short 4 minutes drive to the

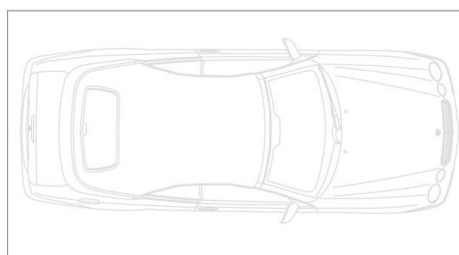
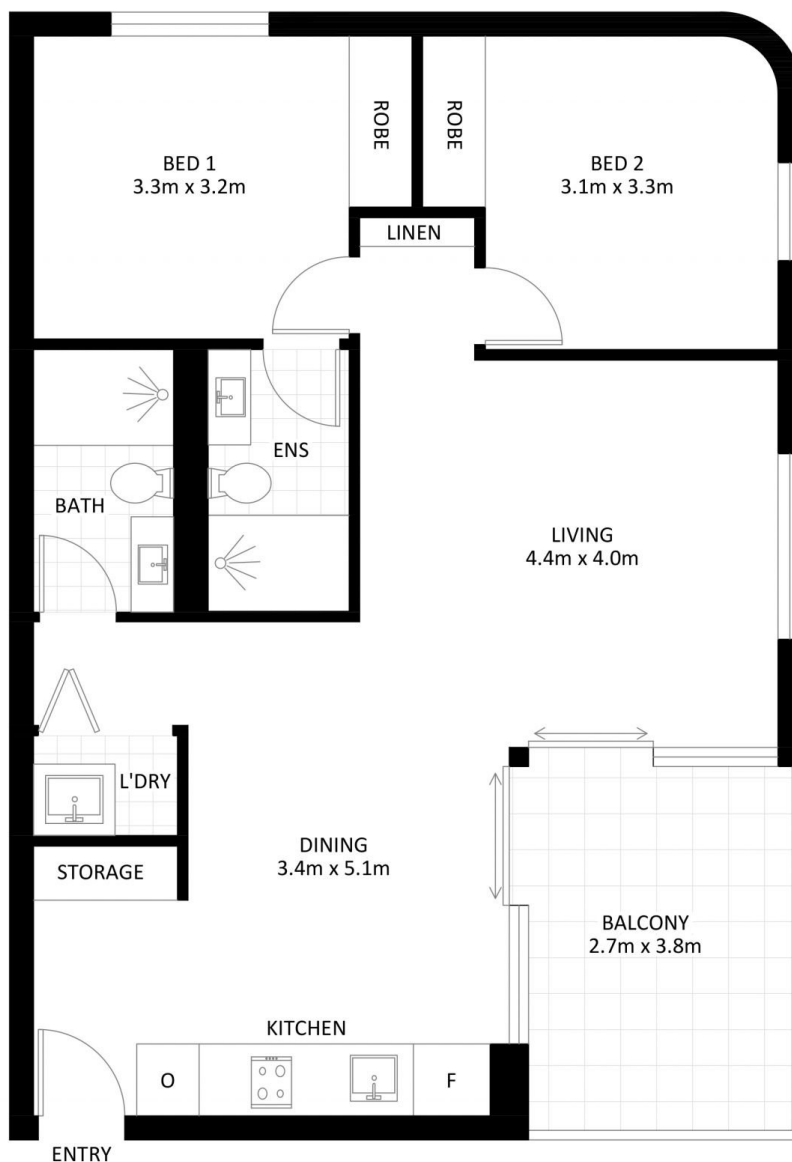
Price : \$2100 Per Week DEPOSIT TAKEN

View : <https://www.villageproperty.com.au/lease/nsw/eastern-suburbs/tamarama/residential/apartment/7947128>



Alan Wang
1300 62 44 00

<https://www.villageproperty.com.au>



SECURITY CAR SPACE
(ONE STACKER)
(NOT ACTUAL LOCATION)



STORAGE CAGE
1.2m x 2.0m
(NOT ACTUAL LOCATION)

INTERNAL FLOOR AREA 77m²
BALCONY AREA 10.5m²
STORAGE CAGE AREA 2.5m²
TOTAL AREA 90m²

7/63 Fletcher Street, Tamarama

Disclaimer: Plans shown are for presentation purposes and are not part of any legal document. All measurements and figures are approximate.