

VILLAGE PROPERTY



D710/97 Dalmeny Avenue Rosebery NSW

2 2 1

Experience contemporary living in this two-bedroom apartment on the 7th level of the prestigious 'Genesis' building. Enjoy easy access to Banilung Park, Gunyama Park, The Cannery, and Green Square Station. Victoria Park, East Village, and more are just steps away, offering convenience at your fingertips. This apartment offers a low-maintenance lifestyle minutes from the CBD and airport.

*Currently leased for \$860 per week. Lease expires February 2025.

- Light-filled corner position
- Covered entertainment balcony and garden outlook
- Two double bedrooms with built-in wardrobes
- Modern gas kitchen with breakfast bench and sleek appliances

Price : Contact Agent

View : <https://www.villageproperty.com.au/sale/nsw/east-ern-suburbs/rosebery/residential/apartment/7940203>

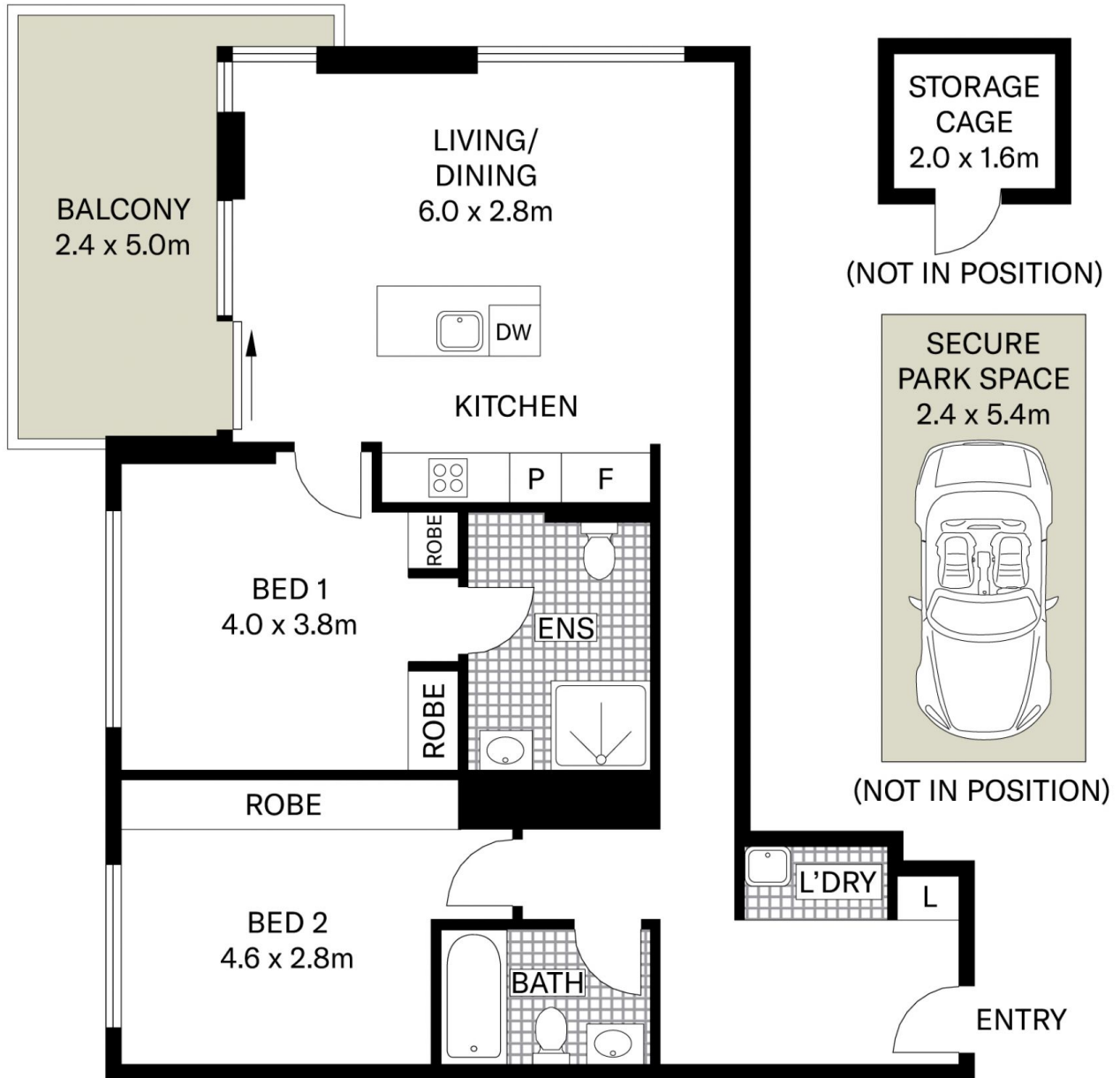


Gene Kingston
1300 62 44 00



Jack Williams
1300 62 44 00

<https://www.villageproperty.com.au>



All information contained herein is gathered from sources we believe to be reliable.
We cannot however guarantee its accuracy and parties should and rely on their own requirements.



D710/97 Dalmeny Avenue, Rosebery

VILLAGE
PROPERTY