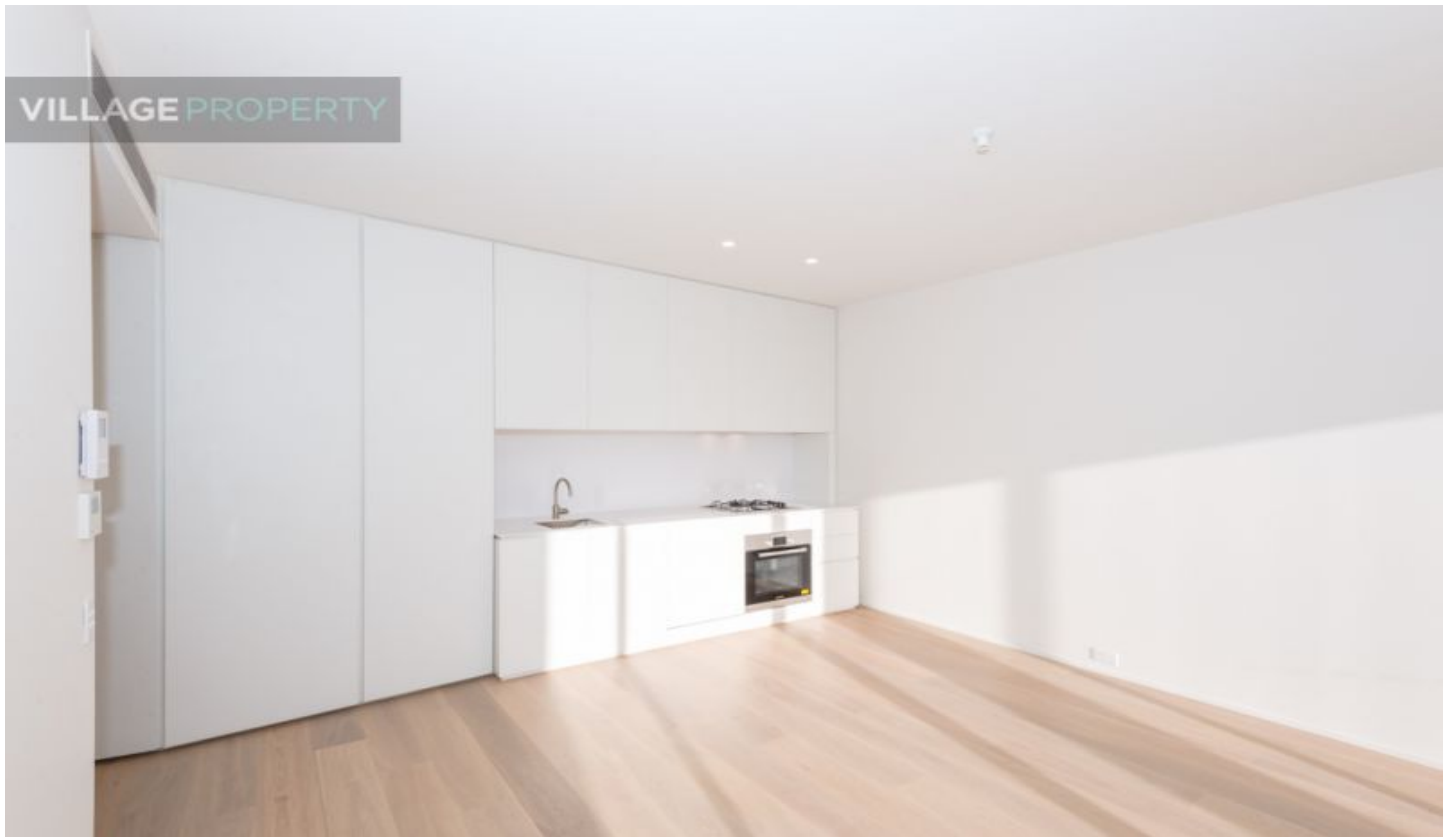


VILLAGE PROPERTY



1305/6 Grove Street Dulwich Hill NSW

1 1 1

Available 7th March

This highly regarded apartment, located in the near new Arlington Grove development will meet all your needs with its smart floor plan and high quality finishes throughout. Fantastically located; one minute walk to Arlington Light Rail stop - be in Sydney's CBD in 30 minutes, moments to Johnson Park and Arlington Recreation Reserve and close to vibrant village hubs of Dulwich Hill and Marrickville. You are just a Moments stroll to Johnson Park and Arlington Recreation Reserve and the iconic Sideways Deli Cafe. Located in the inner city hubs of Dulwich Hill and Marrickville, Arlington Grove is at the heart of a new approach to urban style.

Type : Apartment

Price : \$650 per week DEPOSIT TAKEN

View : <https://www.villageproperty.com.au/lease/nsw/inner-west/dulwich-hill/residential/apartment/7924080>



Alan Wang
1300 62 44 00

[For full version visit the website](https://www.villageproperty.com.au)

<https://www.villageproperty.com.au>

Arlington
Grove Dulwich Hill

KONA
apartments

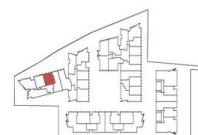
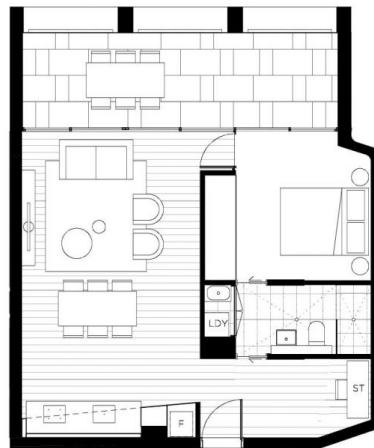
**ONE BEDROOM +
STUDY
APARTMENT**

1305

INTERNAL AREA:	55m ²
EXTERNAL AREA:	16m ²
TOTAL:	71m ²

ARLINGTONGROVE.COM.AU
1800 881 221

galileo **CBRE**



Vertical stainless steel wires
(or a similar mechanism) will
be required on balconies
facing the light rail to prevent
the possibility of large items
falling onto the light rail

All areas shown are draft and subject to survey. All apartments subject to contract and availability. Images showing the building, interiors and views are computer generated prior to construction and indicative only. Dimensions, layouts, finishes and specifications are subject to change and may differ from those shown. Views differ between apartments. Ground floor retail not yet confirmed. Furniture and paintings are for illustrative purposes and are not included.
01/05/2015