

VILLAGE PROPERTY



902/36 Oxford Street Epping NSW

2 2 1

Flooded with natural light and boasting contemporary style, this sophisticated two-bedroom apartment offers low-maintenance designer living, in the bustling heart of Epping. Nestled within "Vista tower", a striking architectural creation from the Oxford Central development, it showcases a chic, modern aesthetic complemented by sweeping north-facing views.

An irresistible opportunity for both occupiers and astute investors, this property is conveniently located mere steps from an enticing array of cafes, shops, and dining venues. Adding to its allure, CBD-bound trains are practically at your doorstep.

Key features include:

- Abundant natural light and a thoughtfully designed open

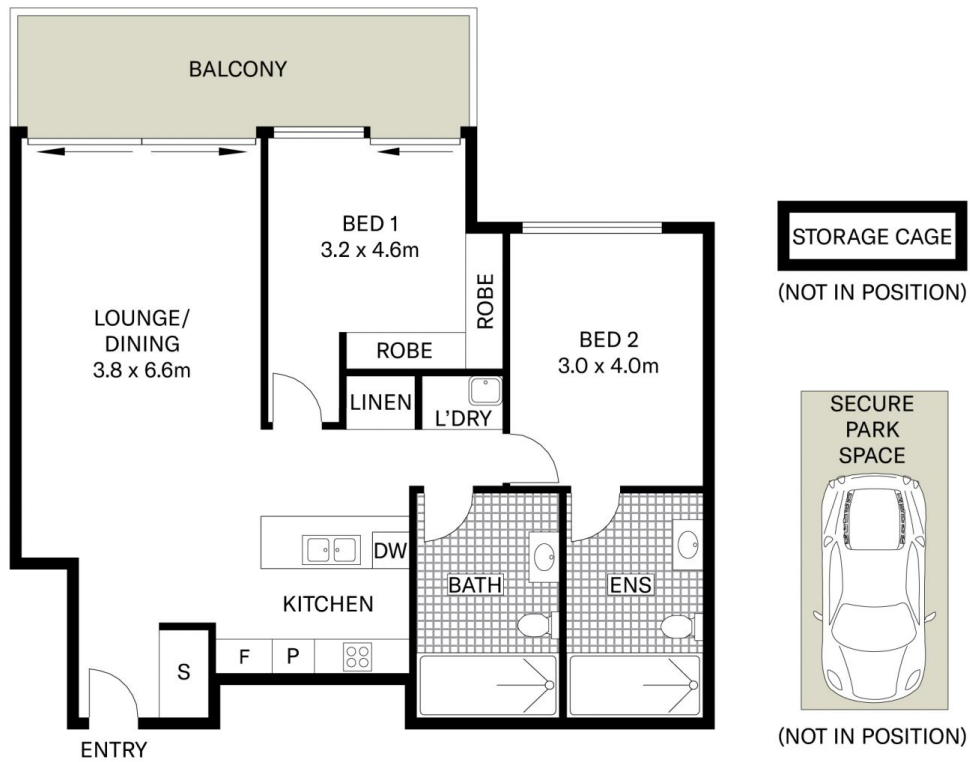
Price : \$930,000

View : <https://www.villageproperty.com.au/sale/nsw/northern-suburbs/epping/residential/apartment/7908967>



Thomas (Tom) Jones
1300 62 44 00

<https://www.villageproperty.com.au>



All information contained herein is gathered from sources we believe to be reliable.
We cannot however guarantee its accuracy and parties should and rely on their own requirements.



902/36 Oxford Street, Epping

VILLAGE
PROPERTY