

# VILLAGE PROPERTY

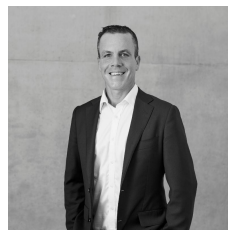


## 402 Liverpool Road Croydon NSW

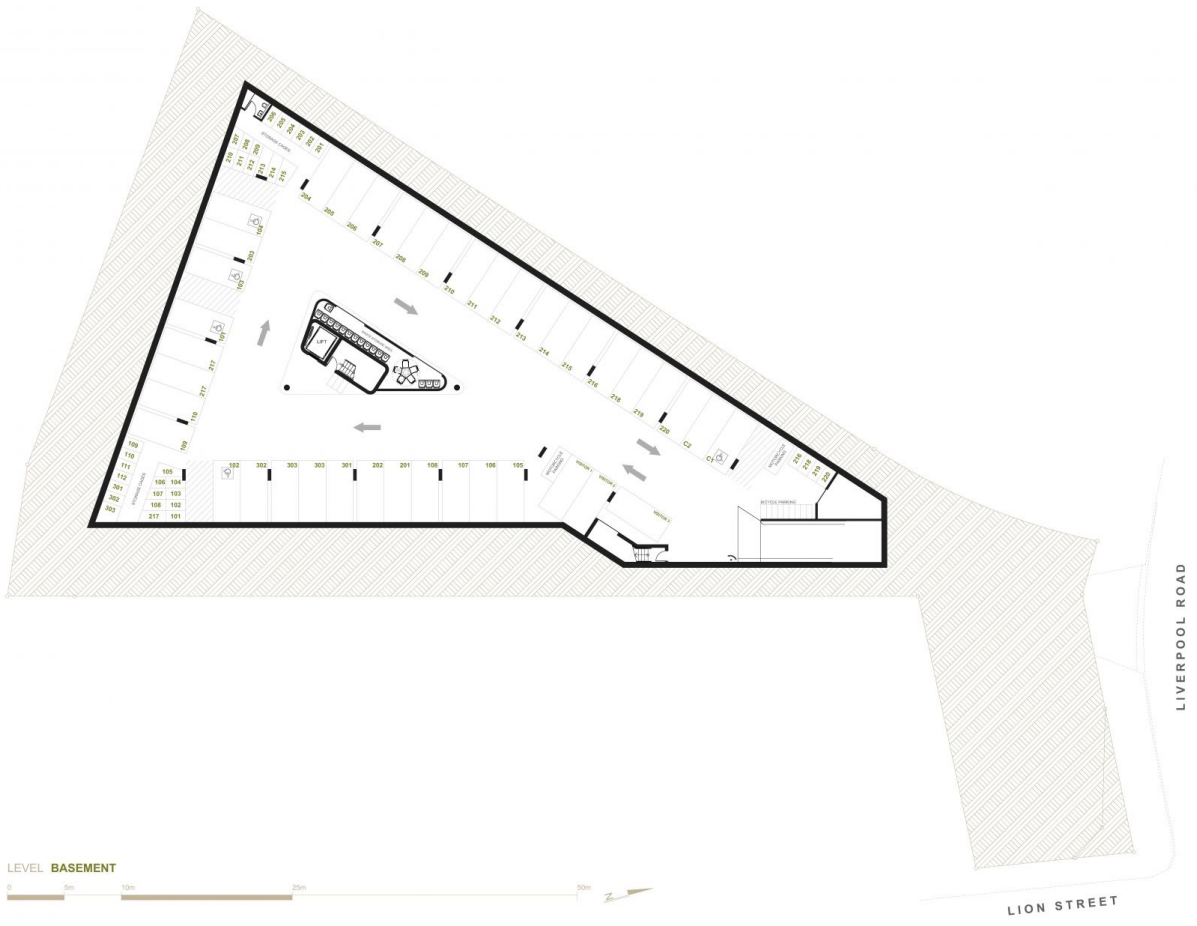
Modern living meets urban oasis at Arley Greene in Croydon, a boutique collection of just 35 one, two and three bedroom apartments, many with split-level designs. It's set within peaceful lush landscapes, yet at the doorstep of the cultural diversity and vibrancy that the flourishing inner west is so well known for. Developed by Hone constructions, each unit has been carefully crafted to offer full functionality paired with contemporary finishes like engineered timber flooring and an effortless open-plan style. Kitchens are fitted with stunning caesarstone bench tops, quality Miele appliances and connect seamlessly to living and dining areas. Ground floor apartments boast unique grassy terraces while units above contain two balconies perched amongst serene leafy green vistas, with full height glazing pouring warm natural light and fresh air throughout the homes. Bathrooms feature frameless showers and freestanding baths designed for relaxation

**Price** : From \$595,000

**View** : <https://www.villageproperty.com.au/sale/nsw/inner-west/croydon/project/apartment/7905860>

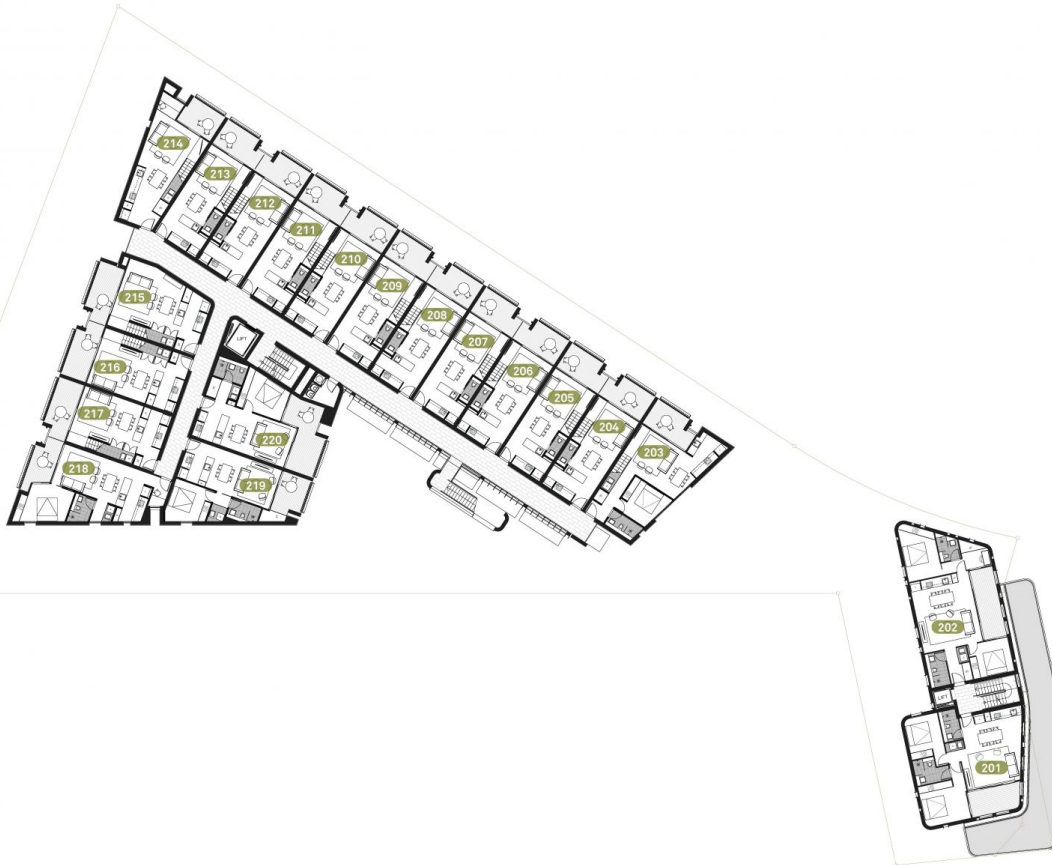


**Nick Barnett**  
1300 62 44 00





LEVEL 02



LEVEL 01 (GROUND)

