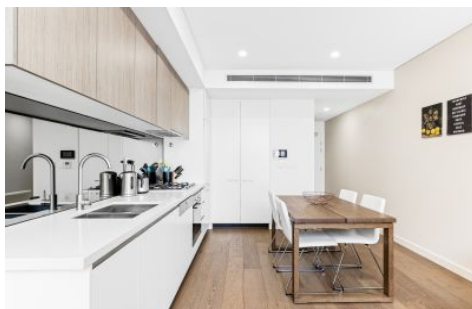


VILLAGE PROPERTY



2508/6 Kingsborough Way Zetland NSW

1 1

Quietly positioned in the heart of Zetland, this stunning oversized residence with a study offers a coveted lifestyle. Boasting an oversized layout across two floors, it combines sleek design and urban sophistication. An ideal investment or residence, the property provides long-term appeal with its smart use of space and quiet position in the development.

- ? Spacious loft-style layout, perfect for modern living
- ? Stylish open-plan kitchen with premium appliances
- ? Versatile, spacious study room, ideal for the home office
- ? Bright and airy bedroom with oversized windows
- ? Substantial covered balcony ideal for outdoor entertaining
- ? Chic bathroom with quality finishes and fixtures
- ? Intercom, Secure Swipe Entry

Type : Unit
Price : SOLD X JACK WILLIAMS & GENE KINGSTON
View : <https://www.villageproperty.com.au/sale/nsw/eastern-suburbs/zetland/residential/unit/7900832>

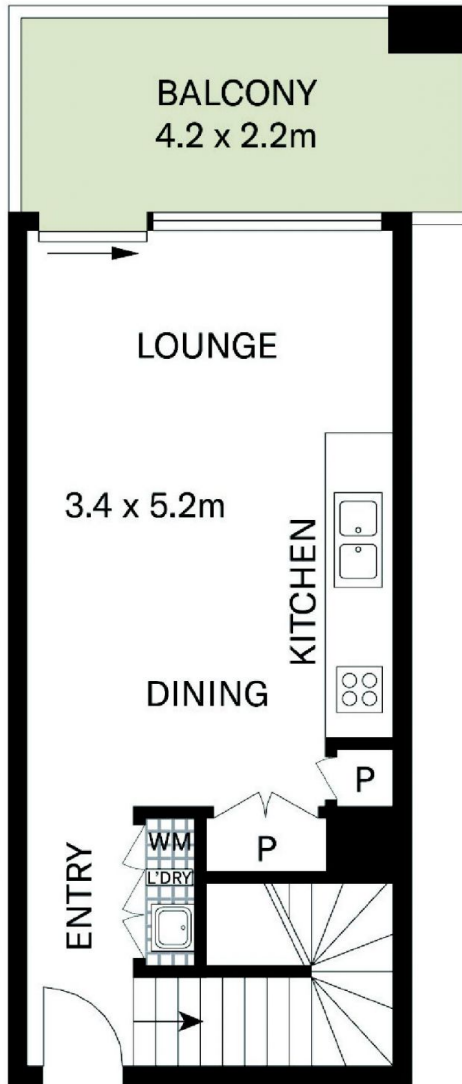


Jack Williams
1300 62 44 00

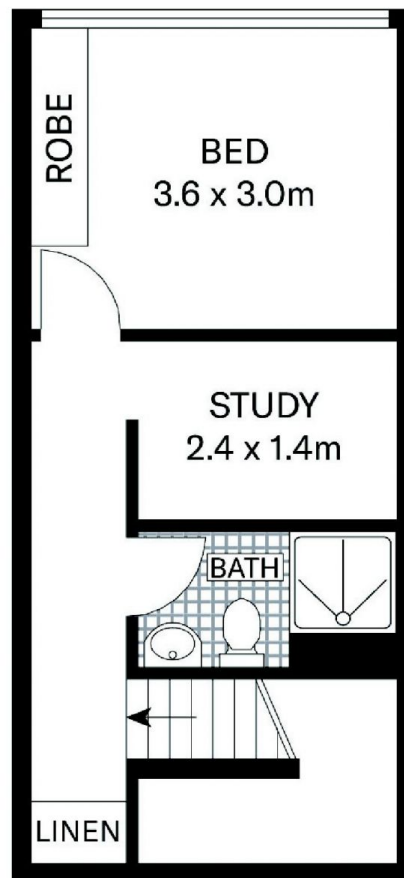
[For full version visit the website](https://www.villageproperty.com.au)

<https://www.villageproperty.com.au>

VILLAGE PROPERTY



FIRST LEVEL



SECOND LEVEL



2508/6 Kingsborough Way, Zetland

DISCLAIMER: PLANS SHOWN ARE FOR PRESENTATION PURPOSES AND ARE NOT PART OF ANY LEGAL DOCUMENT. ALL MEASUREMENTS AND FIGURES ARE APPROXIMATE.