

# VILLAGE PROPERTY



**D303/72 MacDonald Street Erskineville NSW**

2  2  1 

Available 7th February

Beautifully crafted with an exacting attention to detail in both design and finish, this breathtaking residence is the ultimate in modern comfort. Smart, stylish and easy to maintain, this is the ideal apartment for Sydney living. A short level walk to the sweeping grounds of Sydney Park and only minutes to train stations, Erskineville village and King Street.

Eve Apartments offers an unbeatable urban lifestyle just short bus ride from the CBD. Walking distance from the train station and centrally located in Erskineville's famous café and restaurant precinct. Be entertained, be indulged and be nourished with the best in dining, shopping and

**Type** : Apartment

**View** : <https://www.villageproperty.com.au/lease/nsw/inner-west/erskineville/residential/apartment/7876484>



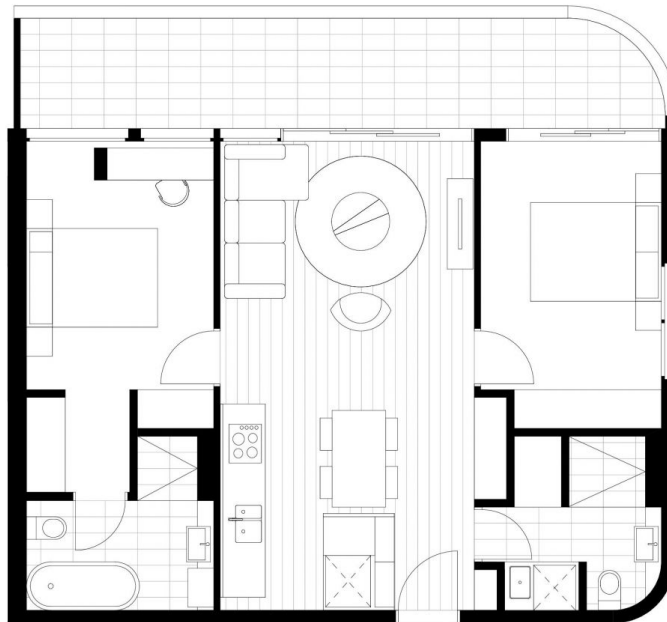
**Alan Wang**  
1300 62 44 00

[For full version visit the website](https://www.villageproperty.com.au)

<https://www.villageproperty.com.au>

# EVE

BY Fridcorp™



Macdonald St

APARTMENT D303

Internal 71.4 m<sup>2</sup>  
 External 16.6 m<sup>2</sup>  
 Total 88.0 m<sup>2</sup>

For more information  
 1800 221 336  
[EveByFridcorp.com.au](http://EveByFridcorp.com.au)

Disclaimer: This plan is a guide only and does not constitute an offer or contract. Please note changes may be made during the development and access. Fixings, fixtures and specifications are subject to change without notice in accordance with the terms of the contract of sale. All parties must rely on their own investigation to validate this information as it is not guaranteed. No liability will be accepted for any inaccuracy or misstatement. (B)

**Hecker  
Guthrie**



**CBRE**