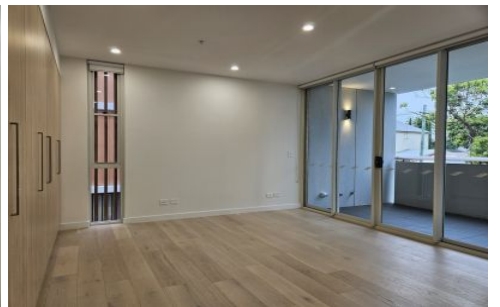
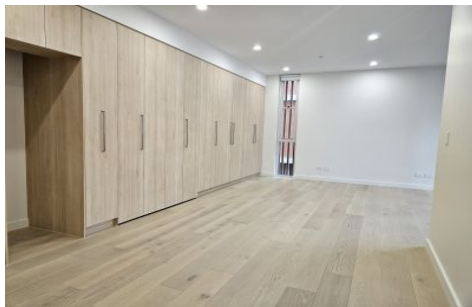


VILLAGE PROPERTY



A101/143 Allen Street Leichhardt NSW

1 1

Available NOW

Presented in the New 'ARA' development, this boutique residence is nestled conveniently in the central hub of Inner West Sydney close to transport and shops. Private communal garden area with BBQ and seating area available to residents. Secure bicycle storage room and visitor parking in basement car park. Minutes walk away from the Light Rail Station that takes you directly to the CBD and bus stops nearby taking you to the buzzing suburbs of Campsie and Balmain. Only a short walk to the popular shopping hub at Marketplace Leichhardt anchored by Aldi supermarket, cafes and retail shops.

Lease periods are 6-14 months.

[For full version visit the website](https://www.villageproperty.com.au/lease/nsw/inner-west/leichhardt/residential/apartment/7832383)

Type : Apartment

Price : \$650 pw DEPOSIT TAKEN

View : <https://www.villageproperty.com.au/lease/nsw/inner-west/leichhardt/residential/apartment/7832383>

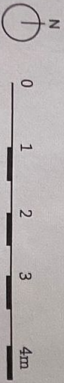
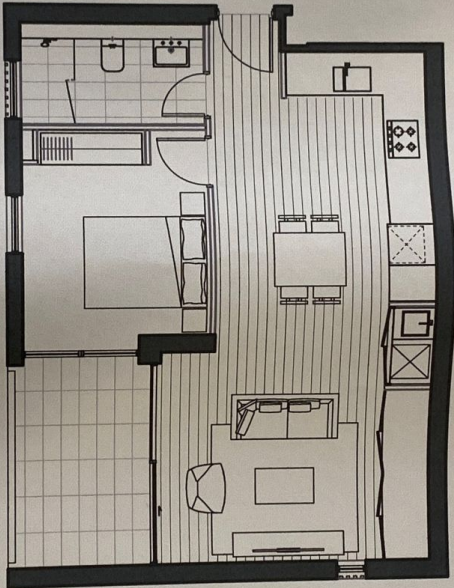


Alan Wang
1300 62 44 00

<https://www.villageproperty.com.au>

ARRA

LEICHHARDT



A1.01, A2.01

BEDROOMS	1	INTERNAL AREA	54 m ²
BATHROOMS	1	EXTERNAL AREA	8 m ²
		TOTAL AREA	62 m ²

DISCLAIMER: THE PARTICULARS ARE SET OUT AS A GENERAL OUTLINE FOR THE GUIDANCE OF INTENDING PURCHASERS AND DO NOT CONSTITUTE AN OFFER OR CONTRACT. THE INFORMATION AND DETAILS ARE GIVEN IN GOOD FAITH AND ARE BELIEVED TO BE CORRECT, BUT ANY INTENDING PURCHASERS SHOULD NOT RELY ON THEM AS STATEMENTS OR REPRESENTATIONS OF FACT, BUT MUST SATISFY THEMSELVES BY INSPECTION OR OTHERWISE TO THE CORRECTNESS OF EACH ITEM, AND WHERE NECESSARY SEEK ADVICE. NO THIRD PARTY REPRESENTATIONS OR WARRANTIES ARE MADE, AND NO REPRESENTATIONS OR WARRANTIES IN RELATION TO THIS PROPERTY.

