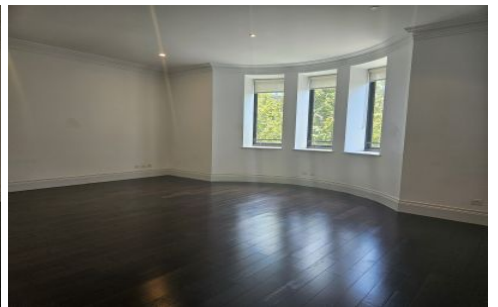


VILLAGE PROPERTY



202/9-15 Bayswater Road Potts Point NSW

1  1  1 

Available Now

This property is an immaculately restored and beautifully detailed Art Deco trophy apartment, situated in the heart of Potts Point. This apartment presents a unique opportunity to live a glamorous lifestyle that fuses the golden age of Art Deco with cutting-edge contemporary design. Located ideally just footsteps away from Kings Cross Station and Woolworths Metro. Popular cafes and restaurants all within walking distance for your convenience.

Lease periods are 6-13 months.
Pets to be considered at landlord's discretion.

[For full version visit the website](https://www.villageproperty.com.au/lease/nsw/ea-stern-suburbs/potts-point/residential/apartment/7828175)

Type : Apartment
Price : \$790 per week
View : <https://www.villageproperty.com.au/lease/nsw/ea-stern-suburbs/potts-point/residential/apartment/7828175>



Aimee-Jo Azzi
1300 62 44 00

<https://www.villageproperty.com.au>



APT
202 / 302 / 402 / 502

1 Bedroom Apartment

Internal area 72m²
Total area 72m²

Note: all areas indicated above are approximate only and are subject to final survey



DEVELOPED BY

 **TOGA**

DISCLAIMER: 1. Please note that this brochure was prepared prior to completion of construction. 2. The photography and images of the landscape and landscape elements, buildings and home interiors are indicative only. 3. The final installed materials and finishes may vary from photography and images contained herein. 4. Changes may be made during the development and construction. 5. Site, finish and modifications are subject to change without notice. 6. The information contained herein is believed to be correct but is not guaranteed. 7. Prospective purchasers should rely on their own enquiries. 8. This brochure is a guide only and does not constitute an offer or contract. 9. While all reasonable care has been taken by The Tooga Group and their related companies, representatives and agents, they accept no responsibility or liability whatsoever for the loss, damage or claim of whatsoever nature, suffered by any person seeking to rely on any information, representation, promise, advice, opinion or other statement provided herein. Design and Art Director by **evrovision**. Architectural Rendered by **evrovision**.

CBRE
CB RICHARD ELLIS

02 8969 8500