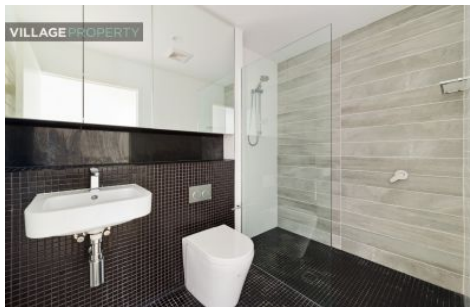
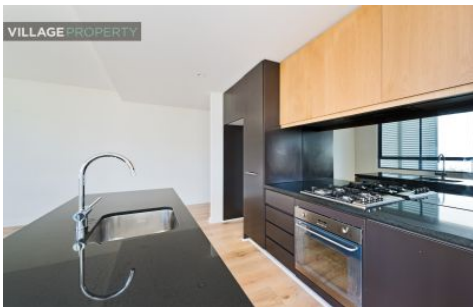





VILLAGE PROPERTY

VILLAGE PROPERTY



D710/97 Dalmeny Avenue Rosebery NSW

2  2  1 

Available 6th December

Seamlessly balancing the convenience of the inner city lifestyle with the desire for the natural environment, 'Genesis' is a landmark oasis of undeniable pedigree. Intelligently designed to maximize the flow of light and space throughout, it is only a short commute to the heart of the city. Short stroll to cafes and eateries only minutes away. Walking distance to Rosebery Woolworths and a short drive to East Village shopping centre.

Lease periods are 6-14 months
Pets at landlord's discretion.

[For full version visit the website](https://www.villageproperty.com.au)

Type : Apartment
Price : \$860 Per Week DEPOSIT TAKEN
View : <https://www.villageproperty.com.au/lease/nsw/eastern-suburbs/rosebery/residential/apartment/7816425>



Alan Wang
1300 62 44 00

<https://www.villageproperty.com.au>