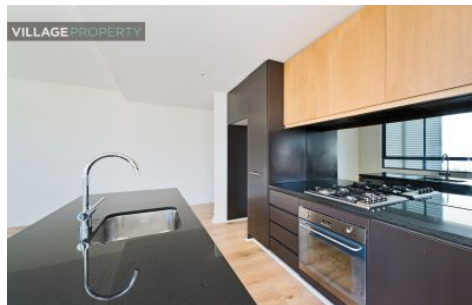


# VILLAGE PROPERTY



**D710/97 Dalmeny Avenue Rosebery NSW**

2 2 1

Available from 5th April -

Seamlessly balancing the convenience of the inner city lifestyle with the desire for the natural environment, 'Genesis' at 'Rosebery Park' is a landmark oasis of undeniable pedigree. Intelligently designed to maximize the flow of light and space throughout, it is simply minutes to the heart of the city yet a world away from care.

- 2 bedrooms with built in wardrobes
- Beautiful views of City Skyline and open outlook
- Master bedroom with ensuite
- Chic kitchen, Smeg gas appliances and granite benches
- Split system air conditioning
- Timber floor throughout

[For full version visit the website](https://www.villageproperty.com.au)

**Type** : Apartment  
**Price** : DEPOSIT TAKEN  
**View** : <https://www.villageproperty.com.au/lease/nsw/eastern-suburbs/rosebery/residential/apartment/7816215>



**Kate Zhang**  
1300 62 44 00

<https://www.villageproperty.com.au>