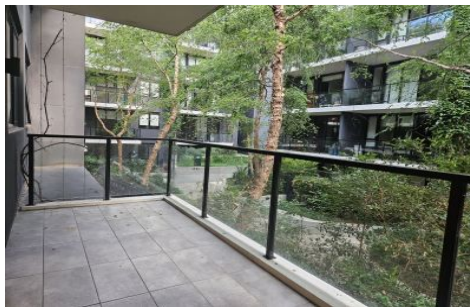


VILLAGE PROPERTY



C207/72 MacDonald Street Erskineville NSW

Available NOW

Beautifully crafted with an exacting attention to detail in both design and finish, this breathtaking garden level residence is the ultimate in modern comfort. Smart, stylish and easy to maintain, this is the ideal apartment for those seeking contemporary living with convenience.

Eve Apartments offers an unbeatable urban lifestyle just short bus ride from the CBD. Walking distance from the train station and centrally located in Erskineville's famous café and restaurant precinct. Be entertained, be indulged and be nourished with the best in dining, shopping and entertainment close by. Woolworths Metro Park Sydney minutes walk away for your everyday shopping needs at

1  1 

Type : Apartment

Price : \$700 Per Week DEPOSIT TAKEN

View : <https://www.villageproperty.com.au/lease/nsw/inner-west/erskineville/residential/apartment/7809211>



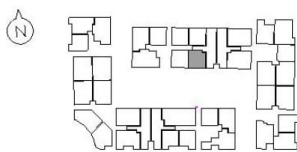
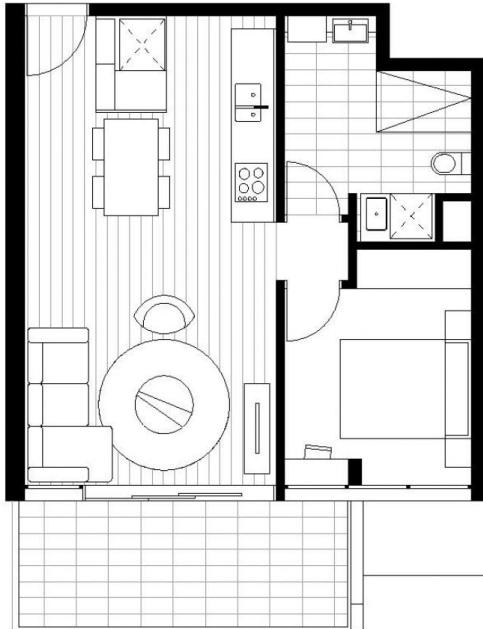
Alan Wang
1300 62 44 00

[For full version visit the website](https://www.villageproperty.com.au)

<https://www.villageproperty.com.au>

EVE

BY Fridcorp™



Macdonald St

APARTMENT 207

Internal 49.1m²
 External 9.9m²
 Total 59.0m²

For more information
 1800 221 336
EveByFridcorp.com.au

Disclaimer: This plan is a guide only and does not constitute an offer or contract. Please note changes may be made during the development and areas, fittings, fixtures and specifications are subject to change without notice in accordance with the terms of the contract of sale. All parties must rely on their own investigation to validate this information as it is not guaranteed. No liability will be accepted for any inaccuracy or misstatement. (E)

**Hecker
Guthrie**



CBRE