

VILLAGE PROPERTY



D4.03/2 Pearl Street Erskineville NSW

Available 29th November

Highly sought apartment in the popular modern Erko development.

Created by award winning SJB Architects and Interior Designers, the thoughtfully crafted apartment is simply bursting with individuality and style. Be the one to live in this fantastic property in the heart of Erskineville.

Located less than 5kms to the CBD, a short stroll to vibrant Erskineville village, train station and numerous parks. Woolworths Metro Park Sydney minutes walk away for your everyday shopping needs at your convenience. Local Cafés and eateries within walking distance.

Lease periods are 6-12 months.

[For full version visit the website](https://www.villageproperty.com.au)

2 1

Type : Apartment

Price : \$820 Per Week DEPOSIT TAKEN

View : <https://www.villageproperty.com.au/lease/nsw/inner-west/erskineville/residential/apartment/780904>
1



Alan Wang
1300 62 44 00

East 2 Bed

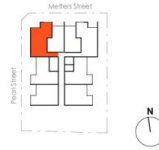
D3.03, D4.03, D5.03

Internal Area: 65 m²

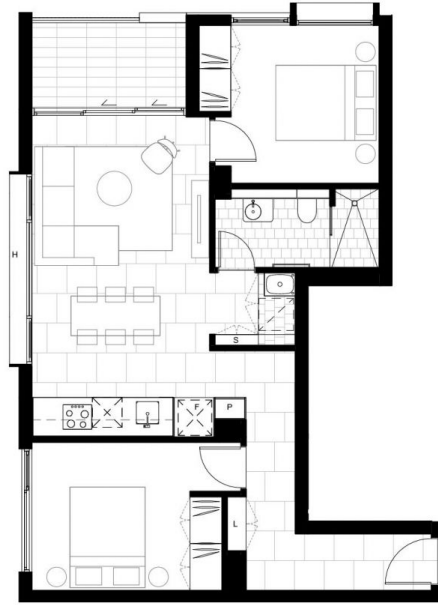
Balcony Area: 5 m²

Total: 70 m²

Key:
 F Fridge cavity
 P Pantry
 L Linen
 S Storage
 H High level window
 PS Private Screen
 PD Private Glass



Designed by **ASB**



east
at erko

apartments
erskineville

eastaterko.com.au
1800 196 107

DISCLAIMER: This plan was produced prior to construction and has been prepared for marketing purposes only. The information is believed to be correct but is not guaranteed. Changes may be made during construction and dimensions, areas, fittings and finishes are subject to change in accordance with the contract for sale. Prospective purchasers must rely on their contract for sale for the fit of inclusions and other details. Bulkheads for services are not depicted and the position of furniture and furnishings should not be taken to be indicative of final positions of power points, air conditioning units and life lines.

LEIGHTON
PROPERTIES

LEASING
MANAGEMENT

CBRE