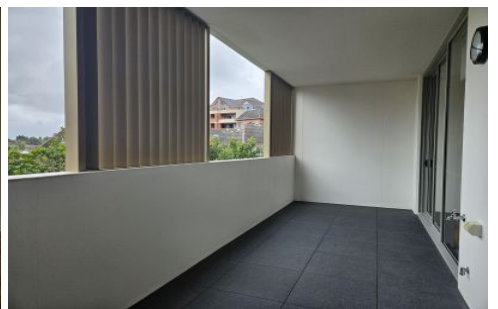
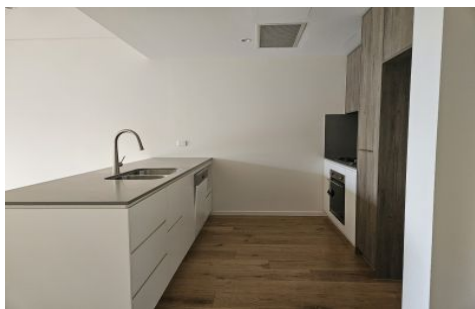


# VILLAGE PROPERTY



**105/17 Grosvenor Street Croydon NSW**

**3**  **2**  **2** 

Available NOW

This beautiful residence offers worlds of abundance for those seeking a unique cosmopolitan backdrop with a genuine neighbourhood feel. Perfectly located between city and suburb, this property unites style, comfort and absolute convenience in one sensational address. Only minutes walk to Croydon Train Station, cafes, restaurants and eateries at your convenience.

Lease periods are 6-12 months.  
No pets preferred.

Features:

[For full version visit the website](#)

**Type** : Apartment

**Price** : \$995 Per Week

**View** : <https://www.villageproperty.com.au/lease/nsw/inner-west/croydon/residential/apartment/7806628>



**Aimee-Jo Azzi**  
**1300 62 44 00**



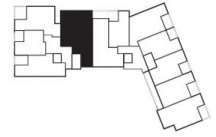
Disclaimer: The particulars are set out as a general outline for the guidance of intending purchasers and do not constitute an offer or contract. All descriptions, dimensions, references to conditions and necessary permutations for use and others details are given in good faith and are believed to be correct, but any intending purchasers should not rely on them as statements or representations of fact, but must satisfy themselves by inspection or otherwise to the correctness of each item, and where necessary seek advice. No third party supplier or their agents has any authority to make or give any representations or warranty in relation to this property.

# CHELSEA

CROYDON

—  
**APTS**  
**105, 205, 305, 505**  
**LEVEL 1-5**  
 —

INTERNAL	105m <sup>2</sup>
EXTERNAL	13m <sup>2</sup>
<b>TOTAL</b>	<b>118m<sup>2</sup></b>



**chelseacroydon.com.au**  
**1800 662 590**

**Lotus**  
 Property Group

**CBRE**