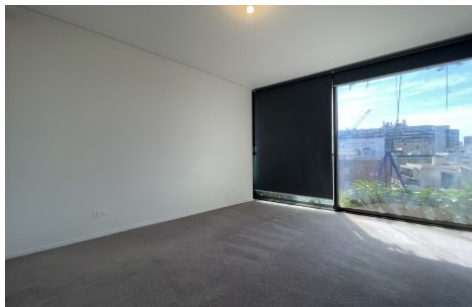


VILLAGE PROPERTY



E607/3 Carlton Street Chippendale NSW

2 1 1

Available NOW

Designed by world-class architects, Central Park is located just a step away from Central station and Sydney's Creative and education precincts. Highly convenient with shopping, dining and entertainment right within Central Park.

- Combined lounge and dining area with timber floors
- Enclosed balcony/sunroom with breathtaking views
- Modern kitchen with stainless steel appliances
- Modern bathroom
- Built-in wardrobes
- Ducted air conditioning
- Security intercom system

[For full version visit the website](https://www.villageproperty.com.au)

Type : Apartment
Price : \$1,050 Per Week
View : <https://www.villageproperty.com.au/lease/nsw/sydney-city/chippendale/residential/apartment/7776205>



Kate Zhang
1300 62 44 00

<https://www.villageproperty.com.au>

